



## West Valley Demonstration Project

# WVDP Progress Update

Bryan Bower, Director  
DOE West Valley Demonstration Project

August 23, 2006, CTF Meeting

18790\_1



## WVDP Safety

- ◆ 4,231,800 work hours (196 weeks) without a lost time work injury or illness as of 8/18/06
- ◆ One first aid for the week of 8/13/06
  - Employee stung by wasps
- ◆ Two incidents
  - Electrical power cable to an employee's respirator (PAPR) disconnected
    - Employee safely exited area
    - No contamination
    - Use of this specific equipment suspended while incident is investigated
  - Electrical cable to gantry hoist disconnected
    - Operator picked up live electrical cord, signaled for coworkers to unplug cord
    - No injury
    - Employee stand-down meetings held; event currently under investigation

August 23, 2006, CTF Meeting

18790\_2



## Environmental Assessment (EA) Update

- ◆ DOE reviewing comments received on the draft EA
- ◆ EA being revised and will include a comment response section
- ◆ Revised EA will go through review by DOE Headquarters before being finalized

August 23, 2006, CTF Meeting

18790\_3



## Waste Disposition

- ◆ From August 8 – 15, 2006, shipped
  - 1,458 cubic feet of industrial waste
  - 7,388 cubic feet of radioactive waste
- ◆ Total waste volumes disposed to date this year
  - Approximately 120,000 cubic feet radioactive waste
  - Approximately 45,000 cubic feet industrial waste

August 23, 2006, CTF Meeting

18790\_4



## Waste Disposition – Damaged Cemented Waste Drum

- ◆ On August 16, 2006, a damaged drum was identified during on-site inspection of a waste shipment
- ◆ Approximately 45 minutes after the damage was found, about 50 ml (3 – 4 tablespoons) of liquid dripped from the drum
- ◆ The liquid contained low levels of radioactive contamination
- ◆ Drum shipments have been stopped, further analysis of the liquid is underway, and a review is in progress



August 23, 2006, CTF Meeting

18790\_5



## Waste Disposition – Damaged TRU Waste Box

- ◆ During a weekly facility inspection, a hole was discovered in a metal radioactive waste box that was being used to store a section of the glove box that was removed from the Product Packaging and Handling (PPH) area
  - Box located on hard stand outside Chemical Process Cell / Waste Storage Area (CPC/WSA)
  - Box size: approximately 833 cubic feet
  - Hole located approximately 4 feet above ground
  - Hole size approximately 1 x 3 inches
- ◆ No contamination found outside box
- ◆ Dose (on contact) less than 1 millirem
- ◆ Steel plate attached to outside of box to cover hole
- ◆ Investigation ongoing



August 23, 2006, CTF Meeting

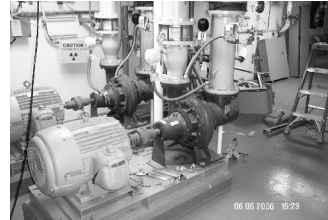
18790\_6



## Ongoing Work

### Cleanup, Decontamination and Equipment Removal

- ◆ To date in 2006 the WVDP has...
  - Cleaned up (i.e., removed, recycled or disposed of) spare and excess materials from five hardstands (open storage pads)
  - Conducted cleaning and/or decontamination activities in about 25 areas of the former Reprocessing Facility



Cooling water pump removal, before (top photo) and after

August 23, 2006, CTF Meeting

18790\_7



## Ongoing Work

### Cleanup, Decontamination and Equipment Removal

- ◆ Work ongoing in Extraction Cell Chemical Room (XCR)...
  - Removal of Temporary Ventilation System (TVS)
    - Installed in 1980s for D&D work to prepare for Vitrification
    - Hasn't been used since
  - Preparing to remove scaffolding from Product Purification Cell (PPC)
    - Used during installation of Interim Waste Treatment Facility in 1980s
    - Has no reuse potential



*The XCR will be cleaned out to provide access to PPC below*

August 23, 2006, CTF Meeting

18790\_8



## Ongoing Work

- ◆ Additional projects in progress include...
  - Removal of two old Utility Room boilers
  - Original equipment dating back to mid-1960s; newer models installed a few years ago
  - Challenging project
    - Weigh 20-tons each
    - Large asbestos removal effort
      - Piping coated with friable asbestos
    - Mildly contaminated
    - Flue stacks have been removed, ports sealed for shipment
    - Will be shipped off site by rail



*Boilers before and after stack removal*

August 23, 2006, CTF Meeting

18790\_9



## Ongoing Work

- ◆ Supplement Analysis for the Waste Management EIS
  - Analyzed:
    - Additional low-level waste volume from Main Plant, and
    - Potential environmental impacts of transporting the glass melter, Concentrator Feed Makeup Tank, Melter Feed Hold Tank
  - Approved June 7, 2006
- ◆ Draft EIS for the Decommissioning and/or Long-Term Stewardship of the WVDP
  - Predecisional copy provided to cooperating agencies (9/05)
  - Met with cooperating agencies in NYC on June 15
  - Estimated 1700 comments received; DOE working resolution with commentors
  - Next: Based on comment resolution, revise EIS and supporting documents

August 23, 2006, CTF Meeting

18790\_10