

West Valley Demonstration Project



Project Update

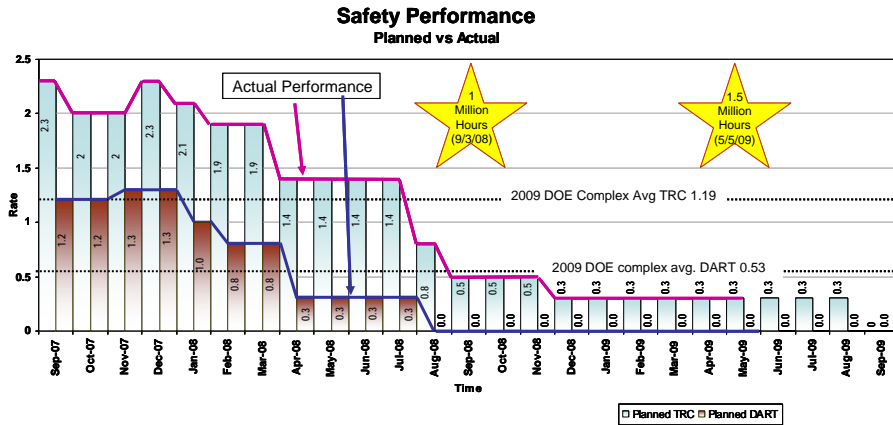
Bryan Bower, DOE Director
 June 24, 2009
 West Valley Citizen Task Force Meeting



www.em.doe.gov

20099_1

Safety Performance



WVES Leads DOE-EM Prime Contractor Sites in FY09 Safety Performance



www.em.doe.gov

20099_2

Safety Initiatives

- Emphasizing “people factor” to maintain site safety
- Follow up on all incidents (even the small ones)
- Working to introduce new employees into WVDP Safety Culture
 - Site Safety Fair June 18
 - Full participation from employees and subcontractors
 - Operations mentors are participating in New Hire training



2009 Safety Fair



EM Environmental Management

safety ↔ performance ↔ cleanup ↔ closure

Business Sensitive

www.em.doe.gov

20099_3

ARRA Projects

- ARRA Projects
 - Main Plant Process Building
 - HLW canister movement (moved to Baseline)
 - Install solidification system for Main Plant liquids
 - Install Tank and Vault drying system
 - Waste processing acceleration
 - North Plateau Plume mitigation
 - 01-14 Building demolition
 - Lagoon isolation
 - Begin Vitrification Facility demolition
 - Slab and foundation removal



EM Environmental Management

safety ↔ performance ↔ cleanup ↔ closure

Business Sensitive

www.em.doe.gov

20099_4

ARRA Projects

- New Hires on Board
 - 49 WVES; 25 subcontract
 - Up to 12 weeks in training
 - Mentors assigned from Operations
 - Introducing new employees to site safety culture
 - Ashford Office Building space used for training



EM Environmental Management

safety ♦ performance ♦ cleanup ♦ closure

Business Sensitive

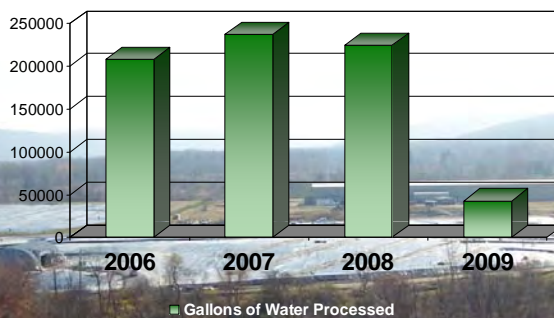
www.em.doe.gov

20099_5

Project Update

- NRC-licensed Disposal Area Cap Performing Well

Gallons of Water Processed
from January 1- June 23



EM Environmental Management

safety ♦ performance ♦ cleanup ♦ closure

Business Sensitive

www.em.doe.gov

20099_6

Project Update

- Main Plant
 - Dismantlement and decontamination work ongoing in multiple locations
 - Process Mechanical Cell Crane Room Extension
 - Waste box removal
 - Extraction Cell – 3
 - Nearly 50% complete with piping removal
 - Acid Recovery Cell
 - Plasma cutting of vessels
 - Analytical Labs
 - Removal of un-needed equipment and fire suppression system for Fume Hoods 4-8 underway



Workers load waste from the cleanup of the Process Mechanical Cell Crane Room into a Standard Waste Box



A Standard Waste Box is removed from the Process Mechanical Crane Room Extension



XC-3 enclosure installation in preparation for vessel removal



EM Environmental Management
safety ♦ performance ♦ cleanup ♦ closure

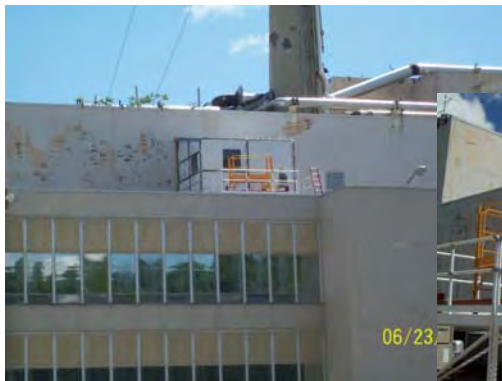
Business Sensitive

www.em.doe.gov

20099_7

Project Update

- Main Plant Process Building (cont)
 - Hot Acid Cell
 - Preparing to break through exterior wall in for vessel removal



Installation of platform and enclosure atop the Main Plant Office Building for Hot Acid Cell vessel removal



EM Environmental Management
safety ♦ performance ♦ cleanup ♦ closure

Business Sensitive

www.em.doe.gov

20099_8

Project Update

Waste Processing

- As of May 31, processed
 - 65,714 cubic feet of legacy (stored) low-level waste (LLW)
 - 28,992 cubic feet of TRU waste
- Start up of CH-TRU processing to new DOE standards
- Major maintenance outage enacted to deal with challenges presented by equipment failures
- Shipped 41 truckloads legacy LLW for off-site disposal when funds became available



Exterior of Lag Storage Area 4, one of the facilities used to process and package waste and prepare it for shipment off site



Operators processed low-level waste boxes in containment structure to prepare for actual CH-TRU waste processing in the newly-modified facility



Waste processing in the modified Waste Packaging Area. First CH-TRU waste box processed.



EM Environmental Management

safety ◊ performance ◊ cleanup ◊ closure

Business Sensitive

www.em.doe.gov

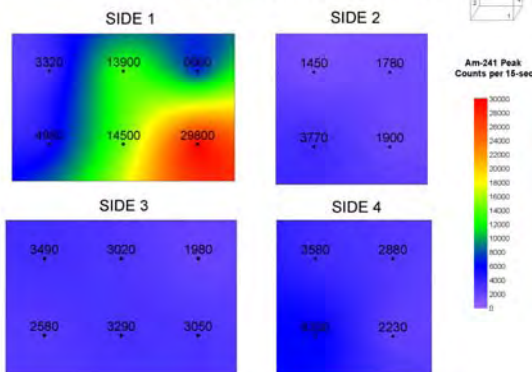
20099_9

Project Update

Waste Segregation

- Waste currently classified as “suspect-TRU” waste being processed to separate the TRU waste from LLW
 - Achieving 88% reduction in TRU waste
- In-Situ Object Counting Scans (ISOCSS) being used to locate TRU waste inside waste containers

B-25 12-1279 - Am-241 As-Found Condition



ISOCSS evaluations illuminate the “hot spots” so operators can more readily locate sections of the contaminated equipment, pipe, etc. This technique is being used to segregate TRU waste from the low-level waste



EM Environmental Management

safety ◊ performance ◊ cleanup ◊ closure

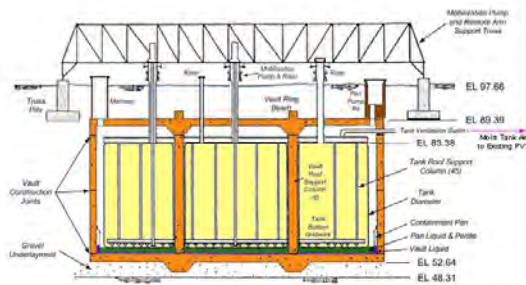
Business Sensitive

www.em.doe.gov

20099_10

Project Update

- HLW Tank and Vault Drying
 - Design requirements have been established
 - Conceptual design completed in December 2008
 - Competitive bids received on April 30 for Design/Build subcontract
 - Award package provided to DOE on May 29 for approval
 - Installation to begin this summer and finish by December 2010



EM Environmental Management
 safety ♦ performance ♦ cleanup ♦ closure

Business Sensitive

www.em.doe.gov

20099_11

Project Update

- North Plateau Groundwater Plume Mitigation
 - Zeolite testing program directed by University at Buffalo (UB) in progress
 - Non-radioactive column tests at UB
 - Radioactive tests on site
 - Pump tests completed along proposed permeable treatment wall (PTW) alignment
 - Alternatives to near-surface permeable barrier in swamp ditch evaluated; decision made to defer construction of swamp ditch mitigation until after PTW installed
 - Characterization Report scheduled for completion by end of July and preliminary PTW design in early fall



Dr. Alan Rabideau, UB professor and graduate student Shannon Seneca examine soil samples for the sampling stage of the project.



Column testing at WVP (above) and UB will provide data for PTW design



Swamp ditch located downgradient of proposed PTW location



EM Environmental Management
 safety ♦ performance ♦ cleanup ♦ closure

Business Sensitive

www.em.doe.gov

20099_12

Project Update

- **Railroad Repair**

- Area of significant erosion created landslide on offsite rail line that supports critical future offsite shipping and disposal, including Vitrification components
 - Conducted extension erosion evaluation and developed an erosion control plan
- Tie and rail change out in area not impacted by landslide is complete
 - Final track conditioning expected to be finalized within 45 days



Rails and ties have already been removed from the repair area at the landslide location



Environmental Management

safety ◊ performance ◊ cleanup ◊ closure

Business Sensitive

www.em.doe.gov

20099_13

Project Update

- **Demolition Preparations Underway**

Cooling Tower



Environmental Lab



Laundry Facility



Environmental Management

safety ◊ performance ◊ cleanup ◊ closure

Business Sensitive

www.em.doe.gov

20099_14

Project Update

- Public Comment Period Extended for Revised Draft Environmental Impact Statement
 - Public Comment Period will close on September 8, 2009
 - Revised anticipated date for Final EIS: February 2010
 - Revised anticipated date for Record of Decision: March 2010



EM Environmental Management

safety ↔ performance ↔ cleanup ↔ closure

Business Sensitive

www.em.dps.gov

20099_15