


NYSDERDA New York State Energy Research and Development Authority

Release of Property at the Western New York Nuclear Service Center

Presentation to the
West Valley Citizen Task Force

November 18, 2009





Partial Site Release

Objectives


- Release a portion of the Western New York Nuclear Service Center (Center) from the NRC license
- Make the property available to the public so it can go back on the tax roll

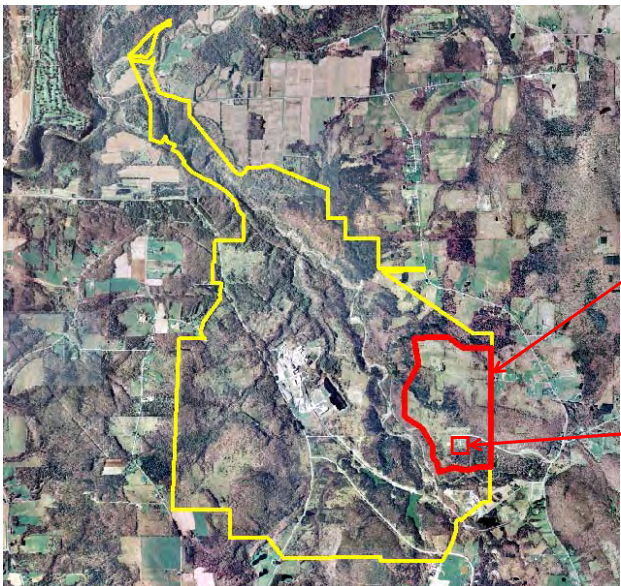
2

 **Western New York Nuclear Service Center**



3

 **Candidate Areas for Partial Site Release**





Boundary of "Non-impacted" area approx. 345 acres

Boundary of "Impacted" area approx. 4.5 acres; includes BSW

4

NYNEMA **Bulk Storage Warehouse (BSW)**

- The former Plutonium Storage Facility – NRC License was terminated in 1975
- Considered an “Impacted” Area by NRC
- DOE used the BSW for storage of excess equipment from 1982-2009
- Control of the BSW was returned to NYSERDA in July 2009
- The BSW measures 80' by 163' (13,040 ft²)
- 326 Pu overpack containers (surveyed, not contaminated) were disposed in a shallow trench south of the BSW with approval by NYSDEC (Scrap Material Landfill)





5

NYNEMA **Goals for Selection of a “Non-Impacted” Area**

- Not Impacted by Reprocessing Operations**
- Not Impacted by WVDP Operations**
- Release of the Area will not Impact the Cleanup of the Center**


6



NYSERDA New York State Energy Research and Development Authority

Candidate Area Screening for Partial Site Release

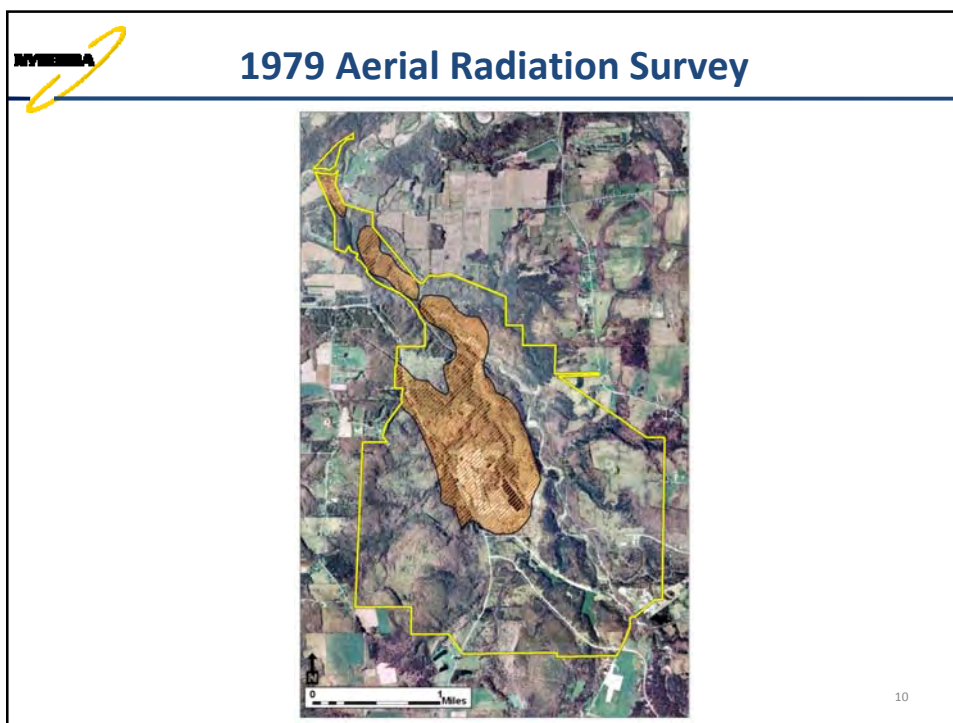
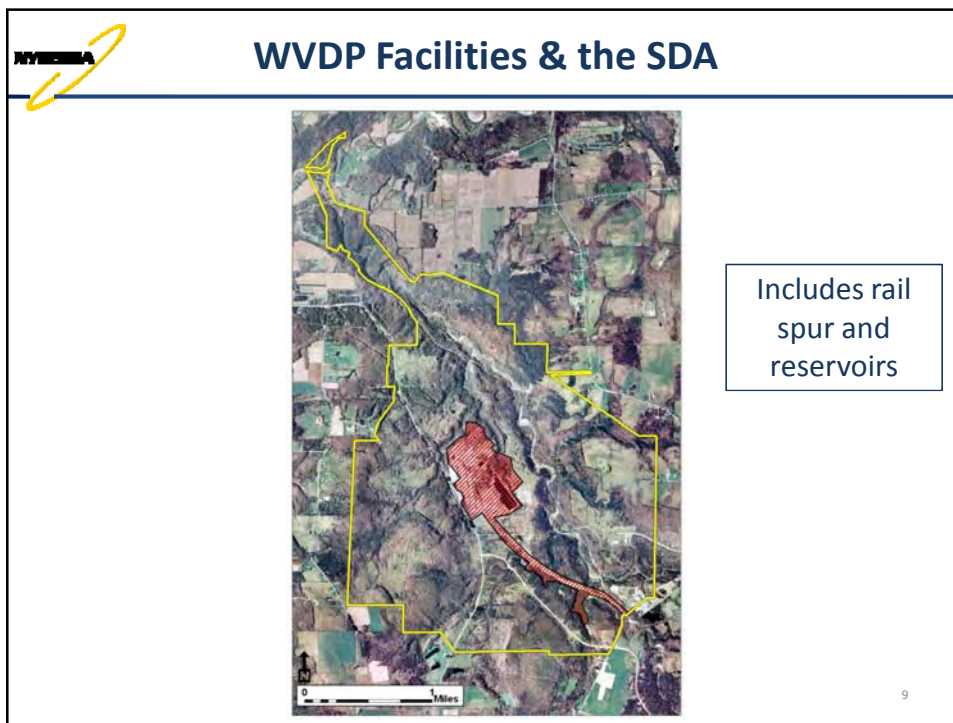
Presented by Lee M. Gordon

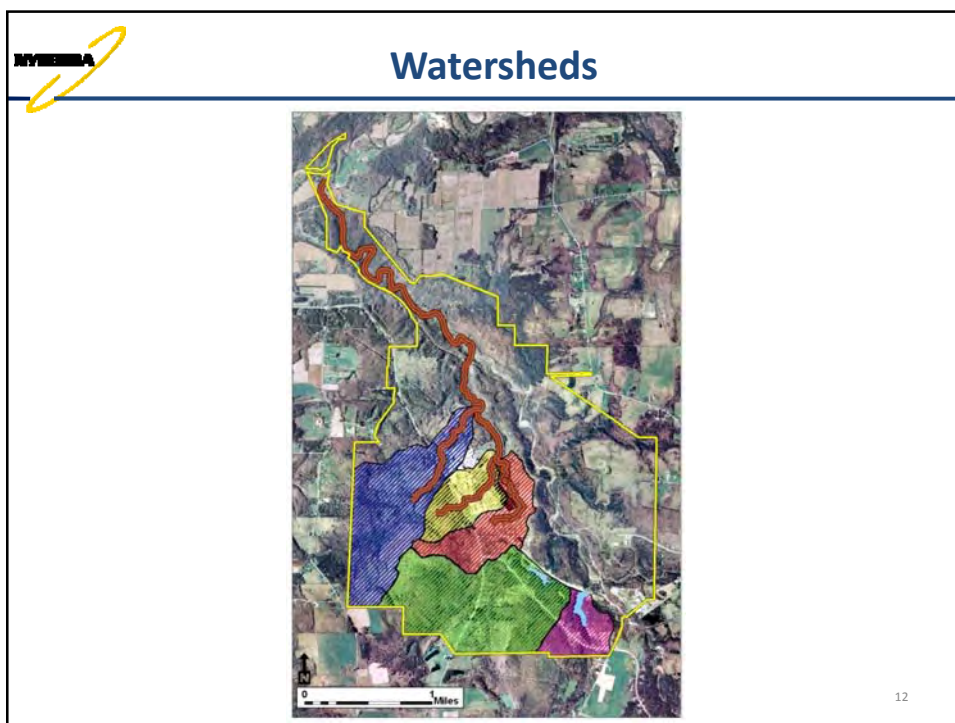
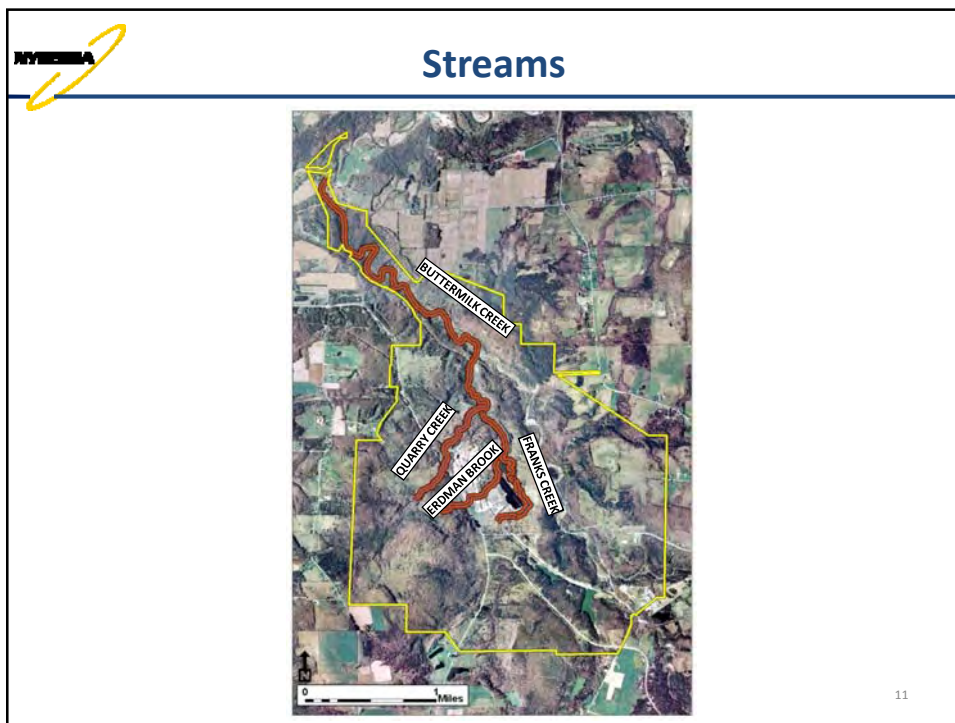


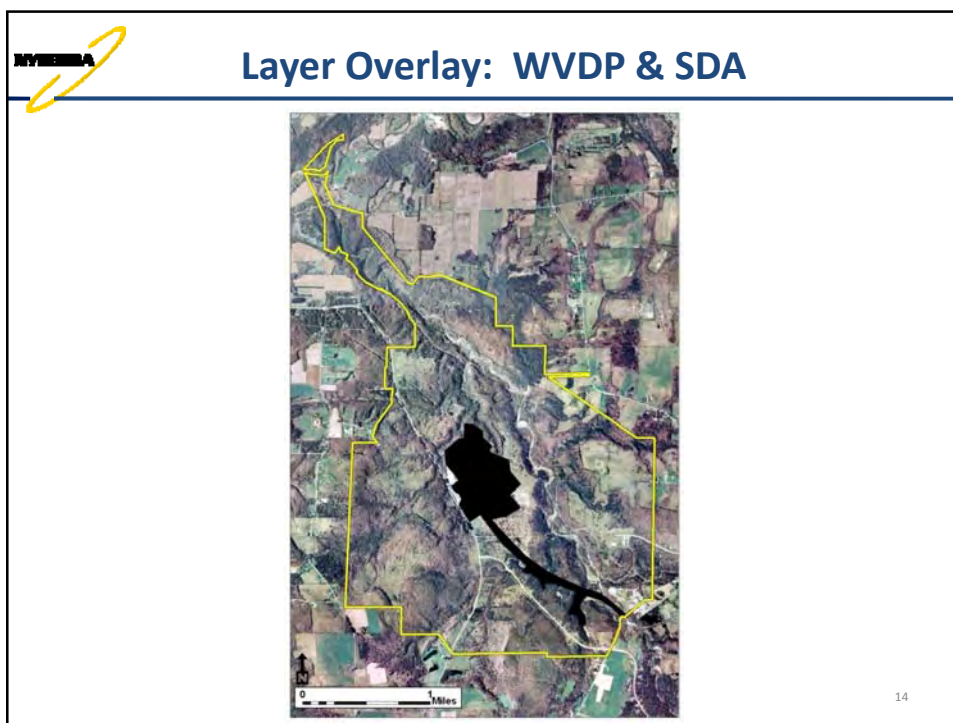
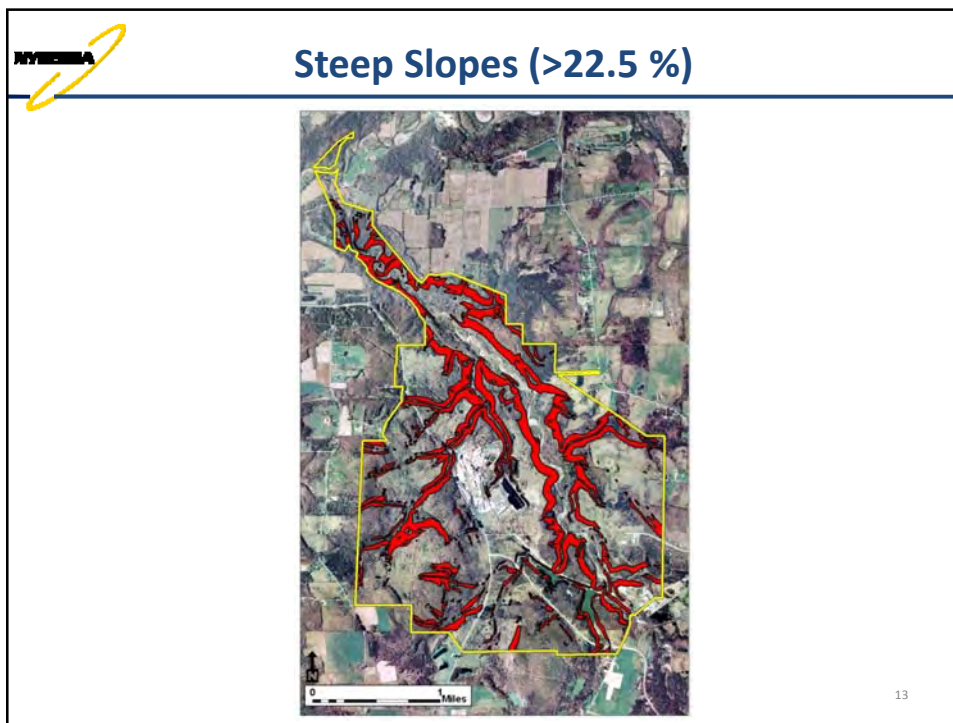
Screening Criteria

- Unavailable Areas
 - WVDP facilities (including rail spur and reservoirs)
 - SDA
 - Aerial Radiation Survey Areas
- Water Resource Considerations
 - Streams & Watersheds
- Land not developable
 - Steep Slopes

8

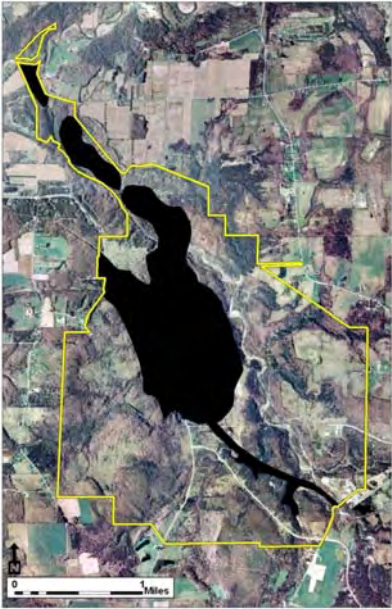






NYEMA

Layer Overlay

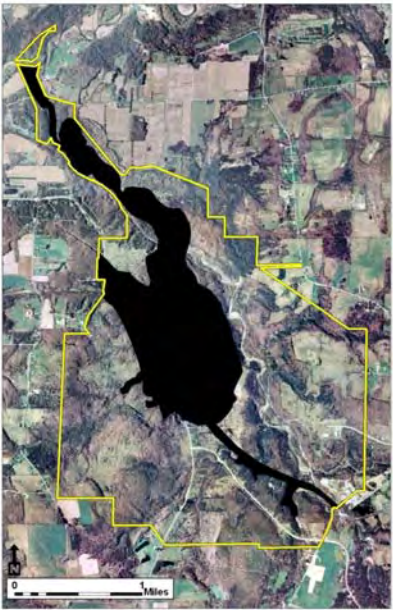


- WVDP & SDA
- Aerial Radiation Survey

15

NYEMA

Layer Overlay




- WVDP & SDA
- Aerial Radiation Survey
- Streams

16

NYEMA

Layer Overlay

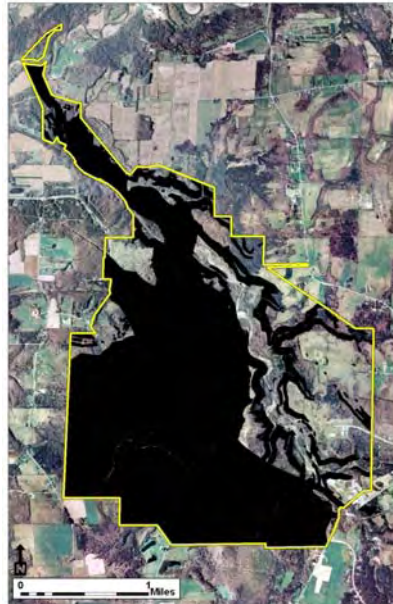


- WVPD & SDA
- Aerial Radiation Survey
- Streams
- Watersheds

17

NYEMA

Layer Overlay

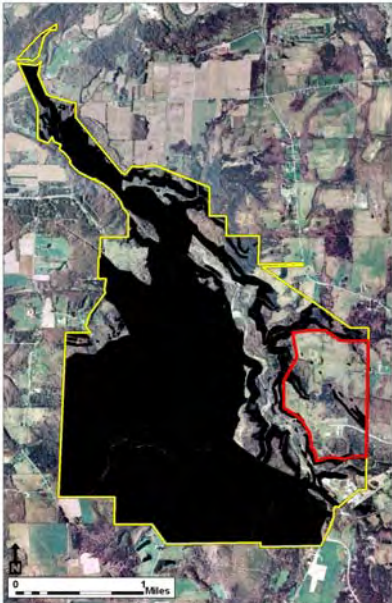


- WVPD & SDA
- Aerial Radiation Survey
- Streams
- Watersheds
- Steep Slopes

18

HYDRA

Candidate Area




- 342 Acres
- Believed to be “Non-impacted”
- Not expected to impact Site cleanup activities
- Developable land


19

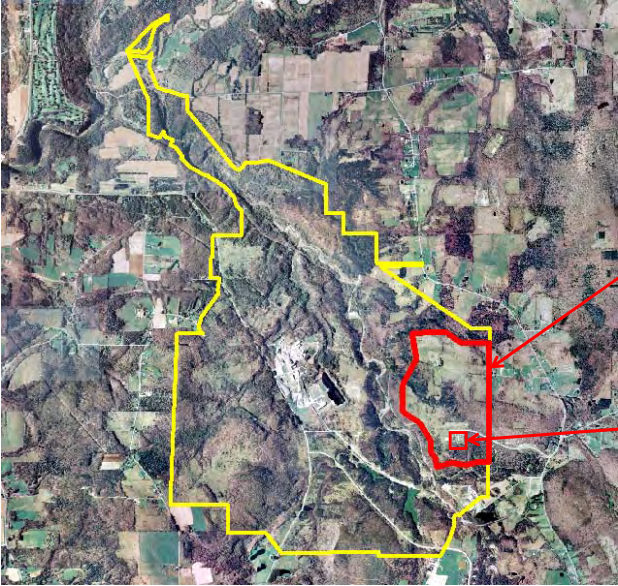
HYDRA

Candidate Area



20


 **Release Property for Unrestricted Use**



Boundary of "Non-impacted" Area approx. 345 acres

Boundary of "Impacted" Area approx. 4.5 acres; includes BSW

21

 **Process for Partial Site Release**

- NYSERDA requested that NRC provide a process to release a "non-impacted" portion of the Center from the NRC license:

The Commission approved the use of sections of 10 CFR 50.83 *Release of part of a power reactor facility or site for unrestricted use* applicable for release of a "non-impacted" area
- NYSERDA will propose using the sections of 10 CFR 50.83 that are applicable for release of an "impacted" area of the Center.

22




Process for Partial Site Release

Request a License Amendment for the Release of Property

- “Impacted” Area -- BSW and 4.5 acres
- “Non-Impacted” Area -- 345 acres

NRC Review and Approval

23



Application for License Amendment

Description of the Areas for Partial Site Release

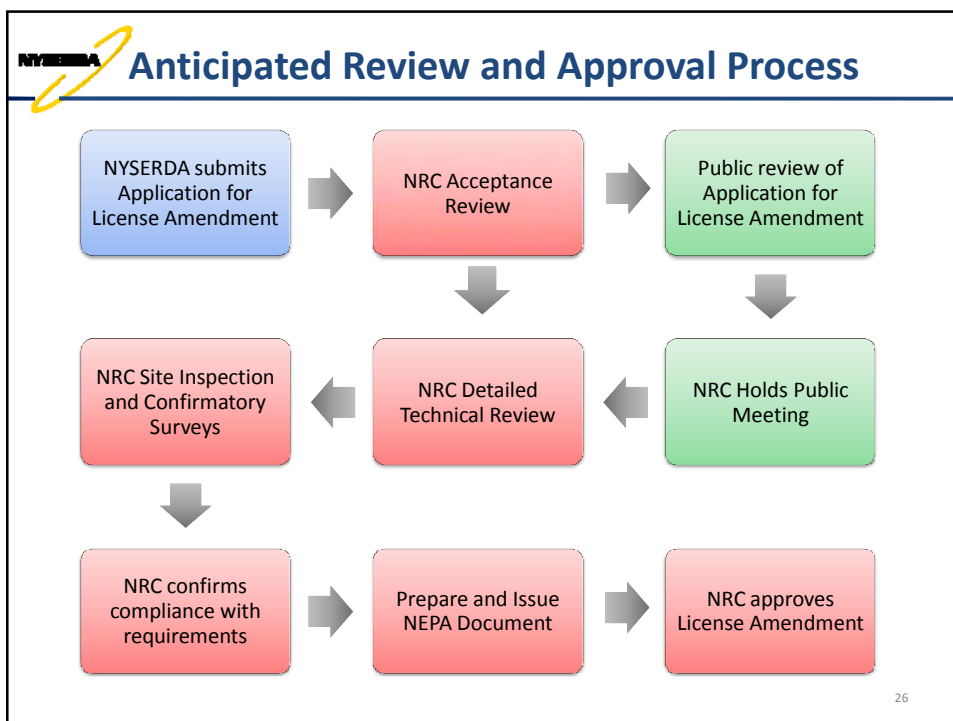
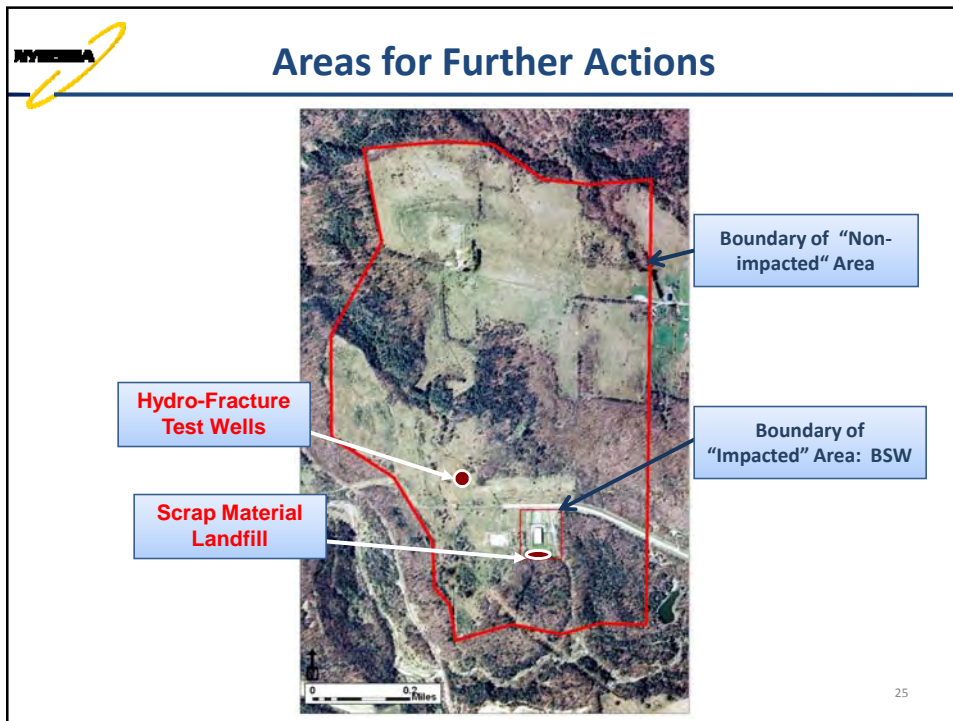
Characterization of Areas

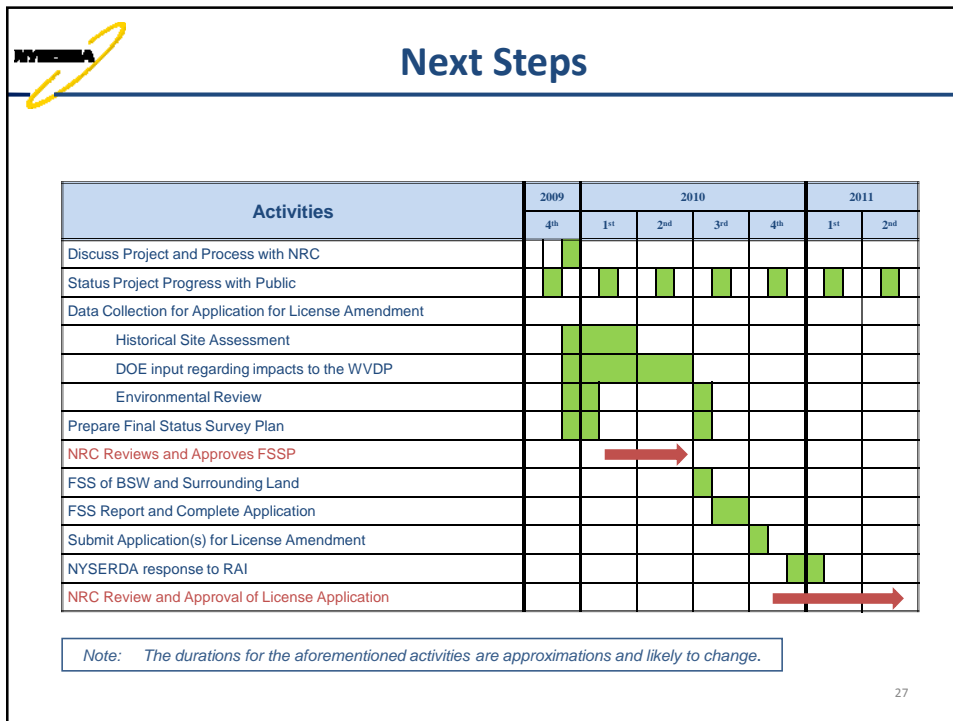
Impacts to Licensed Program

Demonstrate Compliance with NRC Dose Criteria

Environmental Review

24





27

Public Authorities Act

**After release of property from the license,
 NYSDERDA must disposition property in
 accordance with the requirements of the
 Public Authorities Act.**

28