

West Valley Demonstration Project



Project Update

Bryan Bower
DOE-WVDP
December 15, 2010
Citizen Task Force



EM Environmental Management
safety ◊ performance ◊ cleanup ◊ closure

www.em.doe.gov
www.wv.doe.gov

20885_1

Safety Performance

- As of December 10, 2010, WVDP employees have worked more than 3.6 million hours without a lost-time accident or illness
- Three First Aids:
 - Bee sting on nose, Aug 27
 - Bumped shin, Sept 24
 - Hand and upper lip abrasions, Oct 18
 - No first aids in November
- No recordable injuries
- TRC is 0.3 and the DART is 0.2



**Awarded URS
Safe Project of the Year for
2009 Safety Performance**



EM Environmental Management
safety ◊ performance ◊ cleanup ◊ closure

www.em.doe.gov
www.wv.doe.gov

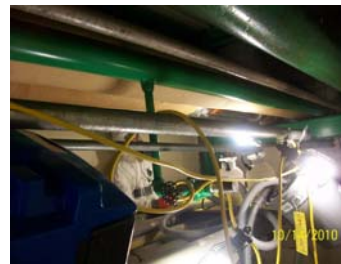
20885_2

Work Activities: Main Plant Asbestos Removal Project

- Contamination Event follow up
 - Completed cleanup in the Lower Extraction Aisle (LXA)
 - Installed special glove bag on vent duct to prevent recurrence
 - Conducted roof repairs to prevent rainwater leakage
- Initiated ACM removal in the LXA (same area where contamination occurred)
 - Completed ~300 LF of non-steam line ACM removal
 - ~200 LF steam line will done in spring when steam system is cool
- Moving to Chemical Operating Aisle



Area where contaminated duct was remediated



ACM removal in the LXA



Environmental Management

safety ♦ performance ♦ cleanup ♦ closure

www.em.doe.gov
www.wv.doe.gov

20750_3

Work Activities: Off Gas Cell and Off Gas Cell Blower Room

- Off Gas Cell
 - Conducting dose reduction activities to prepare for hands-on dismantlement
 - Added 6" grout to floor for dose reduction and surface leveling
 - Conducted remote wall scabbling in highly contaminated corner; did not provide desired results
 - Preparing for grout shielding in corner in mid-January
- Off Gas Blower Room
 - Removed two series of process lines in room
 - Moving into associated pump niches to complete dismantlement
 - Expect January completion



Operators at the controls for remote scabbling equipment



Environmental Management

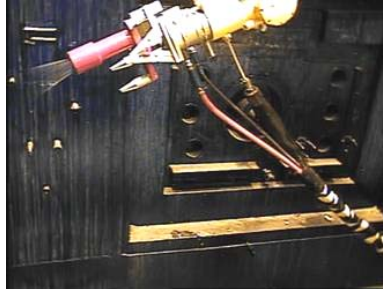
safety ♦ performance ♦ cleanup ♦ closure

www.em.doe.gov
www.wv.doe.gov

20750_4

Work Activities: Head End Cells Nitrocision Project

- Nitrocision® technology is very successful at removing Polymeric Barrier System (PBS) from cell walls
 - Completed wall surfaces in the Process Mechanical Cell (PMC)
 - Preparing for startup of vacuuming system
 - Completed 80% of wall surfaces in the General Purpose Cell (GPC)

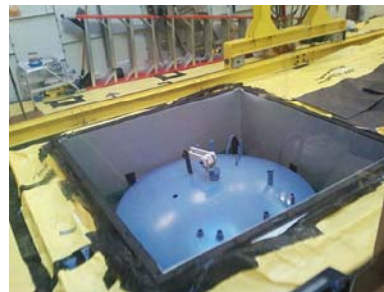


Nitrocision® equipment in the PMC



Work Activities: Extraction Cell – 1

- Remote dismantlement using Nuvision® robotic arm continues
 - Top down piping removal in center of cell underway
 - Completed removal of first vessel
 - Preparing for removal second vessel
 - Core boring completed for vessel decon and fixative application
 - Removal planned for next week



First vessel removed from XC-1



Radioactive Waste Processing

- As of November 30, 2010
 - Processed 77,810 ft³ of legacy (stored) low-level waste
 - Processed 48,800 ft³ of Transuranic waste
- Recent processing improvements
 - Installed floor levelers in Vitrification Facility
 - Implementing drum closure system for high activity remote-handled TRU drums
- Processing improvements planned for January
 - Deploying Brokk 180 in Remote-Handled Waste Facility
 - Deploying remote plasma cutting in Vitrification Facility



Size-reducing a glove box in the Container Size Reduction Facility



EM Environmental Management
safety ♦ performance ♦ cleanup ♦ closure

www.em.doe.gov
www.wv.doe.gov

20885_7

Waste Tank Farm

- Tank & Vault Drying System
 - Completed installation of underground and above ground ductwork for the tanks and vaults
 - Readiness self-assessment is in progress
 - Project remains on target for completion by December 31, 2010



Rotary Dryer



Ductwork installation



EM Environmental Management
safety ♦ performance ♦ cleanup ♦ closure

www.em.doe.gov
www.wv.doe.gov

20885_8

North Plateau Groundwater Plume



Permeable Treatment Wall installation

- Completed Permeable Treatment Wall installation
- Monitoring well installation in progress
 - 29 wells installed to date



Completion of the Permeable Treatment Wall



Environmental Management
safety ♦ performance ♦ cleanup ♦ closure

www.em.doe.gov
www.wv.doe.gov

20885_9

Community Support Programs for Families in Need

WVDP Annual Food Drive

- Nov 8-18
 - Employees, subcontractors, and West Valley Central School students collected ~78,000 lbs of food for eight area food pantries
 - 330 turkeys donated
 - 900 families served
- URS Corporation donated \$10,000 to the Western New York Food Bank for holiday food on December 10
- Supported two families in need with holiday gifts through the Olean Times Herald's Gift Tree Program



Food Drive donations delivered in time for Thanksgiving



Environmental Management
safety ♦ performance ♦ cleanup ♦ closure

www.em.doe.gov
www.wv.doe.gov

20885_10