



TOWN OF ASHFORD

www.ashfordny.com

9377 Route 240
P. O. Box #306
West Valley, NY 14171

Charles E. Davis III, Supervisor

Phone (716) 942-6014
Fax (716) 942-3957
ashfordwv@yahoo.com

COUNCILMAN

John A. Pfeffer
William J. Heim
Richard A. Bernstein
Jean M. Bond

TOWN CLERK

Patricia R. Dashnaw

TOWN JUSTICE

Carl W. Stiles
Melinda G. Mellon

HIGHWAY SUPERINTENDENT

Tim A. Engels

ASSESSOR

Dawn Martin

TOWN OF ASHFORD Impact Aid Request
September 12, 2017

Congressman Reed;

The Town of Ashford seeks our fair share of assistance from the United States for the continued presence of high level, transuranic, greater than class C, and low level nuclear waste in our community.

The West Valley Demonstration Project Act required the solidification and removal of the liquid high level waste to a federal repository, along with other project generated wastes. While the waste has been solidified, it continues to remain at West Valley, and until such time a federal repository is established, the citizens of the Town of Ashford will continue to have this waste in our backyard, without our consent.

We ask for your assistance in establishing the following;

1. Direct Impact Aid to the Town of Ashford in an amount similar to and appropriate for the presence of a facility of this type. We feel that a minimum amount of \$1.5 million dollars per year until cleanup is completed is an appropriate amount. This amount will cover the lack of aid in the past, and provide the town a substantial base moving forward.
2. Continued funding at the appropriate levels required to complete the mission of the West Valley Demonstration Project Act. We believe this level to be at \$75 million per year, based on the 2010 Record of Decision issued by US DOE.
3. Reclassification of all Trans-Uranic Waste, Greater than Class C waste, and all other waste buried at West Valley as Defense Waste, allowing this waste to be placed in current federal waste repositories. The lack of this classification offers no true path for disposal at this time.
4. Continued support of the mission of USDOE Environmental Management cleanup efforts at the West Valley Demonstration Project.

The presence of this facility continues to be a black mark on our town and community. While the rest of Western New York enjoys an improved economy, we continue to see massive declines in population, home sales continue to be stagnant, and the perception and image of our town is still mocked as "waste valley".

The overreach of the federal government (Atomic Energy Commission) and the State of New York when the land was taken continues to this day without making adequate

reparations for the local community. The impact of decisions made by DOE continue to hamper our ability to move forward and grow our community.

- Decisions to cut Cattaraugus County Sherriff patrols at the W/VDP have impacted our town budget by almost \$70,000 in lost ticket revenue.
- Decisions to add infrastructure to the site have resulted in continued changes in the landscape of our rural community.
- Any attempt to redevelop the site is met with logistical and bureaucratic roadblocks.

It is time for the United States to make good on the promises that never came to be in Ashford.

Regards,

Charles E. Davis III

xc: Town of Ashford Town Board

Town of Ashford, NY Community Transition Grant Request

The Town of Ashford, NY seeks US Department of Energy (DOE) Community Transition Grants funding support in connection with the remediation of nuclear waste and other hazardous materials from the DOE West Valley Demonstration Project (WVDP).

The WVDP facility occupies 3,300 acres in the unincorporated area of Cattaraugus County, NY and in the Ashford County Subdivision. The WVDP land and facilities are not owned by DOE. The project premises are the property of the New York State Energy Research and Development Authority (NYSERDA) and represents only 200 acres of the larger Western New York Service Center, which is also owned by NYSERDA.

The WVDP was approved as part of the West Valley Demonstration Project Act of 1980. Under the Act, DOE is responsible for solidifying high-level nuclear waste, disposing of waste created by the solidification, and decommissioning the facilities used in the process. After DOE's responsibilities are complete, the Act requires that the premises be returned to New York State. Until that time, the Act requires New York State to pay 10 percent of the project costs, and DOE pays the remaining 90 percent.

The WVDP acreage is not taxed by virtue of it being owned by NYSERDA. A Payment in Lieu of Taxes (PILT) contract has not been established between Cattaraugus County and DOE.

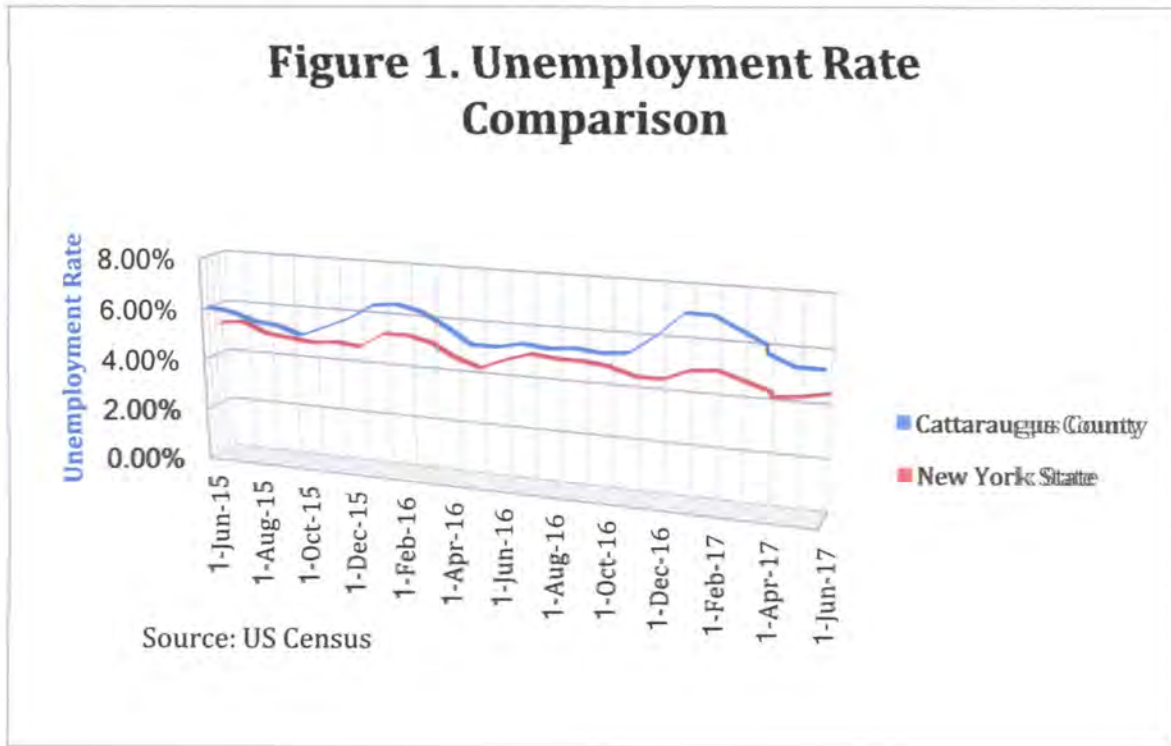
Community Transition Grants - DOE may provide Community Transition Grants to affected communities under Section 3161 of the National Defense Authorization Act (NDAA). Through Section 3161 of the National Defense Authorization Act (NDAA) of 1993, DOE initiated a community transition program to minimize the social and economic impacts of workforce restructuring on communities surrounding DOE facilities. The program encouraged affected communities to chart their own economic development future through the creation of Community Reuse Organizations (CROs). DOE also transfers excess real property to CROs for economic development through Title 10 Code of Federal Regulations (CFR) Part 770 and excess personal property through the Hall Amendment.

A CRO is an organization recognized by DOE that can receive grants for programs that alleviate the impacts of work force restructuring at DOE facilities. Since the program's inception, 15 communities have established CROs and Congress has authorized \$260.5 million and DOE has provided an additional \$34.1 million for a total of \$294.6 million funding for community transition activities.

The Town of Ashford seeks Congressional support to establish a Community Transition Grants program and to establish a Community Reuse Organization (CRO).

Basis for Community Transition Grants Request - The Town of Ashford has been experiencing both an economic and population decline for the past 15 years. We believe there is some connection to these declines from our close proximity to the WVDP. Our hope is to work with the DOE, NYSERDA, and Congress to secure funding to assist us in reversing these trends.

The unemployment rate in Cattaraugus County has been historically higher than the State of New York. The unemployment rate is not calculated at the County Subdivision level. Therefore, the Town of Ashford's rate of unemployment is measured from the County. Figure 1 below tracks unemployment levels in Cattaraugus County to the State of New York since June 2015. Cattaraugus County's unemployment rate ranges from .6%- 2.3% higher in unemployment to the State of New York during the survey period.



According to the U.S. Census Bureau, 2011-2015 American Community Survey 5-Year Estimates the median household income in Ashford is \$47,321 annually. This is higher than Cattaraugus County's average of \$42,601, but lower than the State of New York's value of \$ 59,269, and the nation's median household income of \$53,889.

Ashford's workforce is well educated, and only 8.6 percent have failed to either graduate from high school or obtain a General Equivalency Degree (GED) between 2011 and 2015. However, compared to New York State and the United States, there are lower levels of completing bachelor's degrees or higher levels of education – See Table 1.

Table 1. Educational Attainment
* Persons aged 25 or older

	Ashford	Cattaraugus County	New York	United States
No High School Diploma	8.6%	12.1%	14.4%	13.3%
High School Diploma or GED	40.8%	40.9%	26.7%	27.8%
Some college, no degree	17.4%	17.6%	16.2%	21.1%
Associate's degree	17.0%	11.6%	8.5%	8.1%
Bachelor's degree	10.4%	10.3%	19.4%	18.5%
Graduate or professional degree	5.8%	7.5%	14.8%	11.2%
All Bachelor's degree or Higher	16.2%	17.8%	34.2%	29.8%

Source: ACS 2011-2015

Age - The population of Ashford has been aging. Median age increased from 38.4 years in 2000 to 45 years in 2010. The most current estimate indicates the median age was 46.2 years in 2015. The proportion of the population that is 65 or older has increased from 11.7 percent of all persons in 2000, to 15.3 percent in 2010, to an estimated 20.26 percent of the population in 2015. There has been a corresponding decrease in the proportion of minors in the County. In 2000, persons under 18 years of age made up 26.8 percent of Ashford's population. That proportion was 20.8 percent in 2010, and has increased slightly and is estimated to be 21.71 percent in 2015. There have also been losses in the number of persons aged 18 to 64, and there are 124 fewer residents in that age group now than in 2000. However, the proportion of this middle age group has remained relatively stable, consistently representing approximately 60 percent of the population.

Table 1. Age Distribution

Age Group	2000		2010		2015		Percent Change		
	#	%	#	%	#	%	2000-2010	2010-2015	2000-2015
0-9	297	13.4%	203	9.5%	236	11.0%	-31.6%	16.1%	-20.7%
10-19	336	15.1%	291	13.6%	272	12.7%	-13.4%	-6.5%	-19.0%
20-29	205	9.2%	198	9.3%	199	9.3%	-3.4%	0.6%	-2.8%
30-39	340	15.3%	209	9.8%	171	8.0%	-38.5%	-18.0%	-49.6%
40-49	355	16.0%	378	17.7%	311	14.5%	6.5%	-17.8%	-12.5%
50-59	329	14.8%	352	16.5%	334	15.6%	7.0%	-5.1%	1.6%
60-69	180	8.1%	297	13.9%	364	17.0%	65.0%	22.6%	102.3%
70-79	113	5.1%	135	6.3%	188	8.8%	19.5%	39.6%	66.8%
80+	68	3.1%	69	3.2%	64	3.0%	1.5%	-6.9%	-5.5%

Source: US Census 2000 & 2010, ACS 2011-2015

The largest proportion of the population can be categorized as mature adults (age 40 to 64), which makes up 39 percent of the population. Minors (under 18) is the second largest group, and seniors (65+) make up 20 percent.

Population Trends - Ashford is home to approximately 2,142 residents (U.S. Census). A comparison of the 2000 and 2010 Census reveals that the area has shrunk in population. In 2000, Ashford's population was 2,223 people and by 2010 it lost 91 residents, recording 2,132 people. Over the 10-year time span, Ashford's annual growth rate was approximately 0.96 percent. From 2010 to 2015, Ashford experienced slight population growth, adding 10 new residents, accounting for a 1 percent growth rate. During this time period, the County continued to lose population.

Table 3. Population

Population	2000	2010	2015	Percent Change		
				2000-2010	2010-2015	2000-2015
Ashford	2,223	2,132	2,142	-4.1%	0.5%	-3.6%
West Valley	N/A	518	468	-	-9.7%	-
Cattaraugus County	83,955	80,317	78,962	-4.3%	-1.7%	-5.9%

Source: US Census 2000 & 2010, ACS 2011-2015

West Valley Hamlet is found in the southeast part of Ashford at the junction of Routes 53 and 240. The population of the Hamlet according to the 2010 US Census is 518 persons. By 2015, the Hamlet lost 50 people, shrinking 9.7 percent. During the 5-year time period, the Hamlet had a growth rate of 0.98 percent.

Uses of Community Transition Grants - The Town of Ashford proposes to use funds appropriated under the Community Transition Grants program to support infrastructure development, economic development and workforce training initiatives. The Town is in the process of completing a Comprehensive Plan Development that will provide direction or vision for the type of growth and development necessary for the Town to prosper and compete in the 21st Century. The Town's last venture into developing a Comprehensive Land Plan dates back to the 1960s.

The Town is on schedule to complete the Comprehensive Plan Development Report in January 2018. We believe this Plan will lead to greater private sector interest in making investments in our part of the County and to more people wanting to live in our part of Cattaraugus County.

The Town of Ashford recently received USDA Community Facilities grant and loan funds to install a unitary potable water distribution system in the West Valley Hamlet. The Town envisions that its next capital projects will be to secure funds to construct a unitary wastewater conveyance and

treatment system in both the West Valley Hamlet and the projected growth area along the U.S. Route 219 corridor. The Town also seeks Community Transition Grant funds to provide potable water supply in the 219 Growth Corridor. We are hopeful that DOE Community Transition Grant funds will serve as the required match for federal, state and foundation grant funding opportunities.

Last, the Town of Ashford recognizes that its population has not grown appreciably since the 1960s and that meaningful job opportunities are tied directly to possessing the skills in demand. We would use Community Transition Grant funds to work with both the James town Community College and Chautauqua Works - the local workforce investment board - to facilitate and fund skills retraining programs.