

WVDP and EIS Status

Bryan Bower, DOE Director
West Valley Demonstration Project

Public Meeting
April 23, 2008



www.em.doe.gov

19533_1

Status of Work

- Main Plant Process Building
 - Goal: Prepare the Main Plant Process Building for demolition (dismantlement)
 - Planning / engineering or decontamination in progress for 8 areas



Decontamination of a pump niche in the Upper Warm Aisle in the Main Plant Process Building



www.em.doe.gov

19533_2

Status of Work

- Waste Management
 - Goal: Process / prepare radioactive waste for shipping to off-site disposal facilities
 - Using 5 facilities for processing: 2 remote-handled, 3 contact-handled
 - Since Sept 2007, processed
 - 19,353 ft³ stored (legacy) low-level waste
 - 8,186 ft³ remote-handled



Environmental Management

safety ◊ performance ◊ cleanup ◊ closure

CONFIDENTIAL -- Not to be Considered as a Regulatory Submittal Pre-Decisional DRAFT

www.em.doe.gov

19533_3

Status of Work

- Infrastructure Reduction
 - Goal: Reduce unneeded infrastructure (e.g., buildings, equipment)
 - 11 structures scheduled for demolition or surplus in 2008
 - 7 in progress, 1 completed, 3 on hold
 - 9 outdoor storage areas to be cleared
 - 6 completed, 2 underway



Crane transferred to Town of Providence, NY



Bulk Storage Warehouse, final surveys in progress – potential for community reuse



Environmental Management

safety ◊ performance ◊ cleanup ◊ closure

CONFIDENTIAL -- Not to be Considered as a Regulatory Submittal Pre-Decisional DRAFT

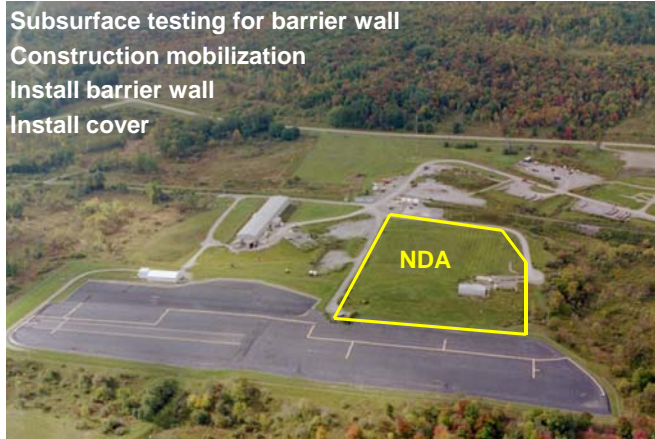
www.em.doe.gov

19533_4

Status of Work

- NRC-licensed Disposal Area (NDA) Cap
 - Goal: Install geomembrane cover over NDA and groundwater barrier wall upgradient of the NDA to prevent water infiltration
 - Sept 07 Subsurface testing for barrier wall
 - April 08 Construction mobilization
 - June 08 Install barrier wall
 - Sept 08 Install cover

A 7-acre geomembrane cover and 950 ft of barrier wall will be placed at the NDA



EM Environmental Management

safety ◊ performance ◊ cleanup ◊ closure

CONFIDENTIAL -- Not to be Considered as a Regulatory Submittal Pre-Decisional DRAFT

www.em.doe.gov

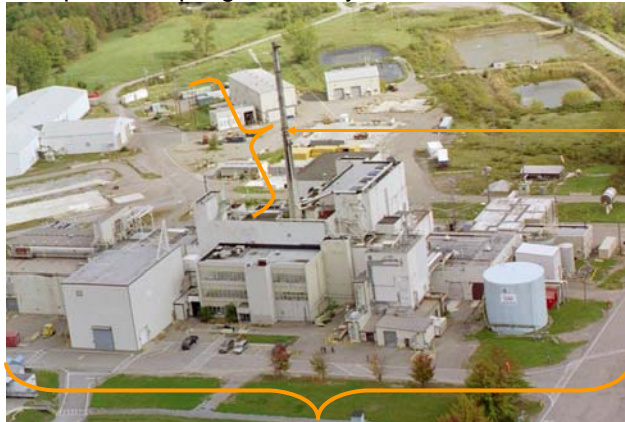
19533_5

Status of Work

- North Plateau Subsurface Sampling for Hazardous Constituents
 - Goal: Complete sampling and analysis in CY 2008

2006 – 2007
Developed sampling plans with New York State Department of Environmental Conservation

CY 2008
Conduct field work and analysis in accordance with Sampling and Analysis Plans



Sampling for hazardous constituents will be conducted under and near (down-gradient) of the Main Plant

Background sampling will be conducted up-gradient of the Main Plant



EM Environmental Management

safety ◊ performance ◊ cleanup ◊ closure

CONFIDENTIAL -- Not to be Considered as a Regulatory Submittal Pre-Decisional DRAFT

www.em.doe.gov

19533_6

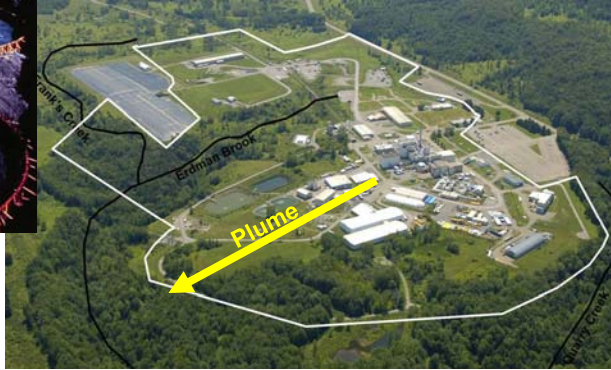
Status of Work

- North Plateau Groundwater Plume Mitigation (Sr-90)
- High-Level Waste Tank Vault Drying

Start in 2008;
Complete by 2011



Underground waste tanks



North Plateau Groundwater Plume



EM Environmental Management

safety ♦ performance ♦ cleanup ♦ closure

CONFIDENTIAL -- Not to be Considered as a Regulatory Submittal Pre-Decisional DRAFT

www.em.doe.gov

19533_7

Path Forward

- Goal: Develop plan(s) based on Core Team recommended alternative to meet...
 - DOE NEPA requirements
 - Draft EIS in progress
 - NRC Decommissioning requirements
 - Phase 1 Decommissioning Plan under development
 - NYSDEC RCRA requirements
 - Discussions being held / path clarified
 - Waste Determinations
 - Melter waste determination in progress



EM Environmental Management

safety ♦ performance ♦ cleanup ♦ closure

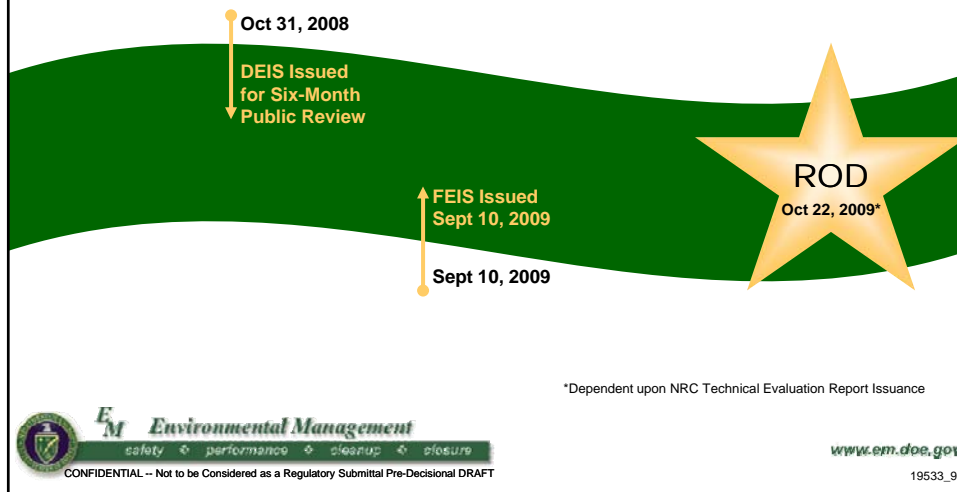
CONFIDENTIAL -- Not to be Considered as a Regulatory Submittal Pre-Decisional DRAFT

www.em.doe.gov

19533_8

Current EIS Schedule

Today co-lead and cooperative agencies agreed to work on developing a schedule targeting release of the DEIS on Oct 31, 2008



Review of Core Team Preferred Alternative

WVDP Interim End State (~2011)



19425



Environmental Management

safety ◊ performance ◊ cleanup ◊ closure

CONFIDENTIAL -- Not to be Considered as a Regulatory Submittal Pre-Decisional DRAFT

www.em.doe.gov

19533_11

Draft Decommissioning EIS Preferred Alternative Recommended by Core Team

- Phase 1 would include both actions and assessments (studies)
 - Proposed Phase 1 Actions (~2011 – 2018)
 - Construct new on-site storage facility for High-Level Waste (HLW) canisters; move the 275 canisters of solidified HLW to a new on-site storage facility
 - Remove the Main Plant Process Building including below-grade sections and the source area of the North Plateau Ground Water Plume
 - Removal of Liquid Low-Level Waste Water Treatment Facility, lagoons and all facilities not needed to maintain: Waste Tank Farm, North Plateau Groundwater Plume, NRC-licensed Disposal Area and general site monitoring and maintenance.
 - Further characterize and evaluate site surface soils to identify and remove areas of higher contamination.



Environmental Management

safety ◊ performance ◊ cleanup ◊ closure

CONFIDENTIAL -- Not to be Considered as a Regulatory Submittal Pre-Decisional DRAFT

www.em.doe.gov

19533_12

Draft Decommissioning EIS Site after Phase 1 Actions

Decommissioning decisions on the remaining WVDP facilities/areas would await further assessments



EM Environmental Management

safety ◊ performance ◊ cleanup ◊ closure

CONFIDENTIAL -- Not to be Considered as a Regulatory Submittal Pre-Decisional DRAFT

www.em.doe.gov

19533_13

Draft Decommissioning EIS after Phase 1 Actions

- The following facilities/areas would remain and would continue under active management
 - WTF
 - NDA, SDA
 - Remaining contained portion of the contaminated NPGW Plume
 - Areas of low-level surface soil contamination
 - Canisters containing HLW solidified in glass
 - Waste without off-site disposal options
- A final decommissioning decision for the WVDP is proposed to occur no later than 30 years after the Phase 1 Record of Decision
- Within 30 years, NYSERDA will make another decision on the future management of the SDA



EM Environmental Management

safety ◊ performance ◊ cleanup ◊ closure

CONFIDENTIAL -- Not to be Considered as a Regulatory Submittal Pre-Decisional DRAFT

www.em.doe.gov

19533_14