

West Valley Demonstration Project

Draft Environmental Impact Statement for the Decommissioning and/or Long-Term Stewardship of the West Valley Demonstration Project and the Western New York Nuclear Service Center

Structure and Organization of Sections and Chapters

Cathy Bohan

U.S. Department of Energy
July 23, 2008, CTF Meeting

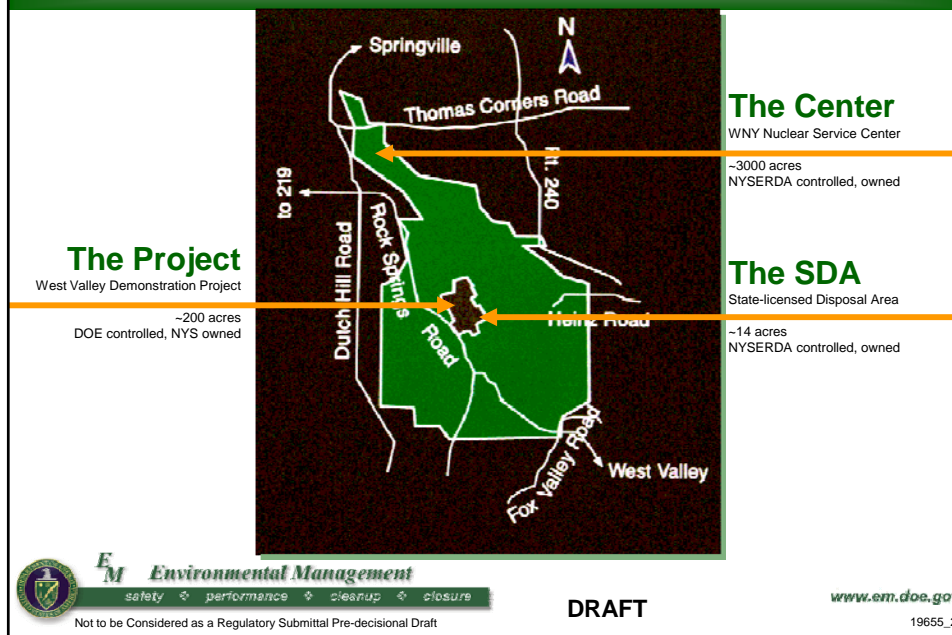


DRAFT

www.em.doe.gov

19655_1

Location

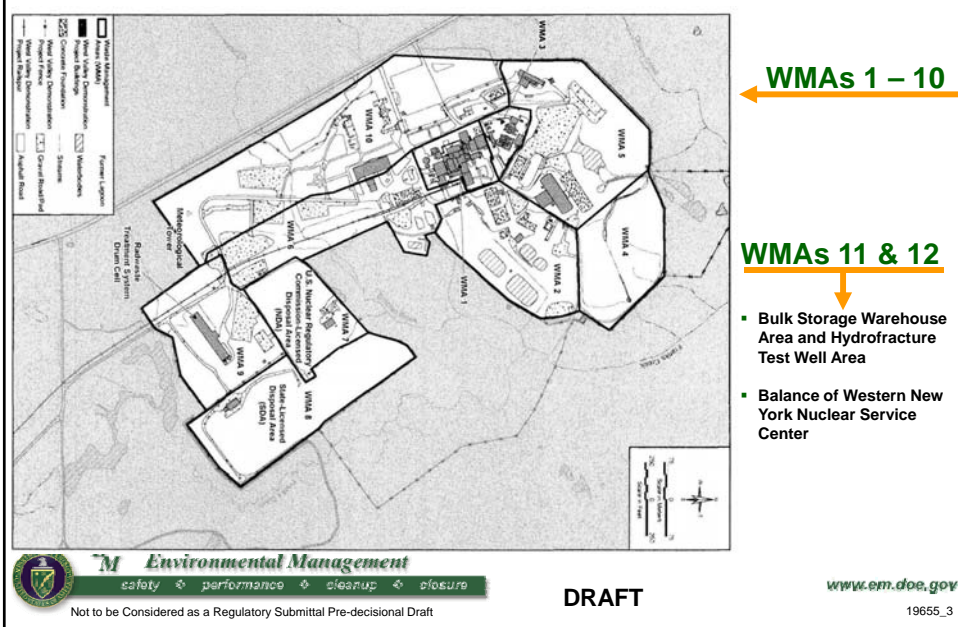


DRAFT

www.em.doe.gov

19655_2

12 Waste Management Areas



Draft Environmental Impact Statement

- A Summary and Guide for Stakeholders
- DEIS Chapters
- DEIS Appendices
- Comment Response

Draft EIS Chapters

Chapters

- 1 Introduction, Purpose and Need
- 2 **Project Description and Alternatives**
Part I: Description of Alternatives
Part II: Comparison of Alternatives
- 3 Affected Environment
- 4 **Environmental Consequences**
Part I: Near-Term Consequences
Part II: Long-Term Consequences
- 5 Applicable Laws, Regulations and other Requirements
- 6 Mitigation Measures
- 7 References
- 8 Glossary
- 9 Index
- 10 List of Preparers
- 11 Distribution List



EM Environmental Management

safety ♦ performance ♦ cleanup ♦ closure

Not to be Considered as a Regulatory Submittal Pre-decisional Draft

DRAFT

www.em.doe.gov

19655_5

Draft EIS Appendices

Appendices

- A Summary of Comments Received on 1996 Draft EIS
- B Federal Register Notices
- C **Descriptions of Facilities/Areas, Implementation Activities, and Descriptions of New Construction**
- D Overview of Performance Assessment Approach
- E Geohydrological Analysis
- F Erosion Studies
- G Models for Long-Term Performance Assessment
- H Long-Term Performance Assessment Results
- I Radiological and Hazardous Chemical Human Health Impacts Evaluation
- J Human Health Effects from Transportation
- K Method for Estimating Nonradiological Air Quality Impacts
- L Regulatory Compliance Discussion
- M Floodplain and Wetland Assessment
- N Intentional Destructive Acts Assessment (Unclassified)
- O Consultation Letters
- P Placeholder for any alternative interpretations or analyses that may be provided by the involved agencies
- Q Contractor Disclosure Statement



EM Environmental Management

safety ♦ performance ♦ cleanup ♦ closure

Not to be Considered as a Regulatory Submittal Pre-decisional Draft

DRAFT

www.em.doe.gov

19655_6

Description of Alternatives

Chapter 2, Part 1

- **Sitewide Removal**
 - All facilities would be removed, except for high-level waste (HLW) canisters
 - HLW canisters stored on site pending Federal waste repository
 - Environmental media would be decontaminated
 - Radioactive, hazardous and mixed waste would be characterized, packaged and shipped offsite for disposal
 - Entire Western New York Nuclear Service Center (the Center) would be available for release for unrestricted use
- **Sitewide Close-in-Place**
 - Key facilities would be closed in place
 - Residual radioactivity in facilities with larger inventories of long-lived radionuclides would be isolated by specially-designed closure structures and engineered barriers
- **No Action**
 - No actions toward decommissioning would be taken
 - Would include continued management and oversight of the remaining portion of the Center and Project premises



EM Environmental Management
safety ♦ performance ♦ cleanup ♦ closure

Not to be Considered as a Regulatory Submittal Pre-decisional Draft

DRAFT

www.em.doe.gov

19655_7

Description of Alternatives

Chapter 2, Part 1

**Preferred
Alternative**

- **Phased Decisionmaking**
 - **Phase 1**
 - Would include removal of Main Plant, Vitrification Facility and 01-14 Building, source area of North Plateau Groundwater Plume (the plume), and the lagoons
 - No decommissioning or long-term management decisions would be made for the Waste Tank Farm and its support facilities, the Construction Demolition and Debris Landfill, the non-source area of the plume, or the NRC-licensed Disposal Area
 - State-licensed Disposal Area (SDA) would continue under active management for up to 30 years
 - Additional characterization would also be included to support additional evaluations to determine the technical approach to be used to complete decommissioning
 - **Phase 2**
 - Would complete the decommissioning or long-term management decisionmaking, following the approach determined through the additional evaluations to be the most appropriate



EM Environmental Management
safety ♦ performance ♦ cleanup ♦ closure

Not to be Considered as a Regulatory Submittal Pre-decisional Draft

DRAFT

www.em.doe.gov

19655_8

Comparison of Alternatives

Chapter 2, Part 2

- Near-term Impacts
 - Address impacts resulting from implementing the decommissioning action (e.g., removal or isolation)
 - Land use: land available for release
 - Socioeconomics: employment level
 - Human health and safety: population dose and worker dose
 - Waste Management: waste generation
 - Transportation: population dose and worker dose
- Long-term Impacts
 - Address impacts resulting from waste remaining on site for the Sitewide Close-in-Place and No Action alternatives
- Cost-benefit Considerations
- Preferred Alternative Identification and Rationale



EM Environmental Management
safety ♦ performance ♦ cleanup ♦ closure

Not to be Considered as a Regulatory Submittal Pre-decisional Draft

DRAFT

www.em.doe.gov

19655_9

Environmental Consequences

Chapter 4

- Analysis of Impacts
 - Cost-Benefit Considerations
 - Incomplete and Unavailable Information
 - Intentional Destructive Acts
 - Cumulative Impacts
 - Resource Commitments
- Land Use & Visual Resources
 - Site Infrastructure
 - Geology & Soils
 - Water Resources
 - Air Quality & Noise
 - Ecological Resources
 - Cultural Resources
 - Socioeconomics
 - Human Health & Safety
 - Long-Term Human Health
 - Waste Management
 - Transportation
 - Environmental Justice



EM Environmental Management
safety ♦ performance ♦ cleanup ♦ closure

Not to be Considered as a Regulatory Submittal Pre-decisional Draft

DRAFT

www.em.doe.gov

19655_10

Appendix C

- Description of Facilities / Areas, Implementation Activities and Description of New Construction
 - Buildings, Facilities and Waste Disposal Areas Analyzed
 - Detailed descriptions
 - Implementation of Decommissioning
 - Description of implementation activities for each action alternative evaluated
 - Proposed New Construction
 - Descriptions of proposed new construction that would be required to support decommissioning activities under each alternative



Draft EIS Appendices

Appendices

- A Summary of Comments Received on 1996 Draft EIS
- B Federal Register Notices
- C Descriptions of Facilities/Areas, Implementation Activities, and Descriptions of New Construction
- D Overview of Performance Assessment Approach
- E Geohydrological Analysis
- F Erosion Studies
- G Models for Long-Term Performance Assessment
- H Long-Term Performance Assessment Results
- I Radiological and Hazardous Chemical Human Health Impacts Evaluation
- J Human Health Effects from Transportation
- K Method for Estimating Nonradiological Air Quality Impacts
- L Regulatory Compliance Discussion
- M Floodplain and Wetland Assessment
- N Intentional Destructive Acts Assessment (Unclassified)
- O Consultation Letters
- P Placeholder for any alternative interpretations or analyses that may be provided by the involved agencies
- Q Contractor Disclosure Statement



Special Sections

- NYSERDA's view on the EIS analyses and results
- Quantitative Risk Assessment for State-licensed Disposal Area



EM Environmental Management

safety ✦ performance ✦ cleanup ✦ closure

Not to be Considered as a Regulatory Submittal Pre-decisional Draft

DRAFT

www.em.dps.gov

19655_13

Technical Reports

- Methodology & Facilities
- Sitewide Removal Alternative
- In-Place Closure Alternative
- Phased Decisionmaking Alternative
- No Action Alternative



EM Environmental Management

safety ✦ performance ✦ cleanup ✦ closure

Not to be Considered as a Regulatory Submittal Pre-decisional Draft

DRAFT

www.em.dps.gov

19655_14

What's Next?

Dec 08

Notice of Availability published in Federal Register and Notice of Completion in the state Environmental Notice Bulletin

Dec 08 – June 09

Six-month public comment period

June – October 09

Comment resolution

Oct 09

Final EIS

Dec 09

Record(s) of Decision and Statement of Findings
DOE decision on WVDP facilities
NYSERDA decision on SDA



EM Environmental Management

safety ♦ performance ♦ cleanup ♦ closure

Not to be Considered as a Regulatory Submittal Pre-decisional Draft

DRAFT

www.em.dps.gov

19655_15