



Citizen Task Force Meeting

Ryan A. Dodd
CH2M HILL B&W West Valley, LLC.
September 28, 2011



EM Environmental Management

safety ❖ performance ❖ cleanup ❖ closure

www.em.doe.gov
0911-001

Project Overview Ryan Dodd



EM Environmental Management

safety ❖ performance ❖ cleanup ❖ closure

www.em.doe.gov
2

Contract Terms

- Cost-Plus-Award-Fee, completion type contract with contract period beginning August 29, 2011
 - Services to be provided include but are not limited to:
 - Project management and support services
 - Site operations maintenance, utilities
 - High-level waste canister relocation
 - Facility disposition
 - Waste tank farm management
 - NRC-licensed disposal area management
 - Waste management and nuclear materials disposition
 - Safeguards and security



EM Environmental Management

safety ❖ performance ❖ cleanup ❖ closure

www.em.doe.gov

3

Milestones

- Process, ship and dispose of all legacy waste off-site
 - November 30, 2014
- Complete high level waste (HLW) canister relocation
 - July 1, 2015
- Demolition and removal of the Main Plant Process Building (MPPB) and the Vitrification Facility (VF) – August 28, 2017
- Complete all work described in the Performance Work Statement – August 28, 2017



EM Environmental Management

safety ❖ performance ❖ cleanup ❖ closure

www.em.doe.gov

4

Management Approach – *First 90 Days*

- Contractor changeover can be distracting and challenging for the workforce:
 - Uncertainties and anxieties are high
 - Historically, safety performance deteriorates during this period
 - Increased risk of serious injury or incident
- First 90-days, “The Focus is Safety” Program
 - ✓ Train, brief, and seek worker feedback
 - ✓ Focus on improving work place safety by eliminating hazards
 - ✓ Good housekeeping will remove combustibles and eliminate slip, trips, and fall hazards
 - ✓ Goal is to get to know and understand the workforce
 - ✓ Explain who we are and what our expectations are for people at every level of the organization
- The partnership developed will result in a safer work environment



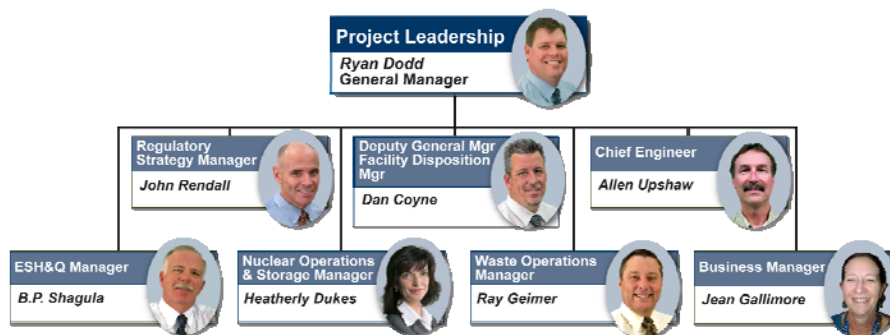
EM Environmental Management

safety ❖ performance ❖ cleanup ❖ closure

www.em.doe.gov

5

Meet the Team



EM Environmental Management

safety ❖ performance ❖ cleanup ❖ closure

www.em.doe.gov

ESH&Q Overview

BP Shagula



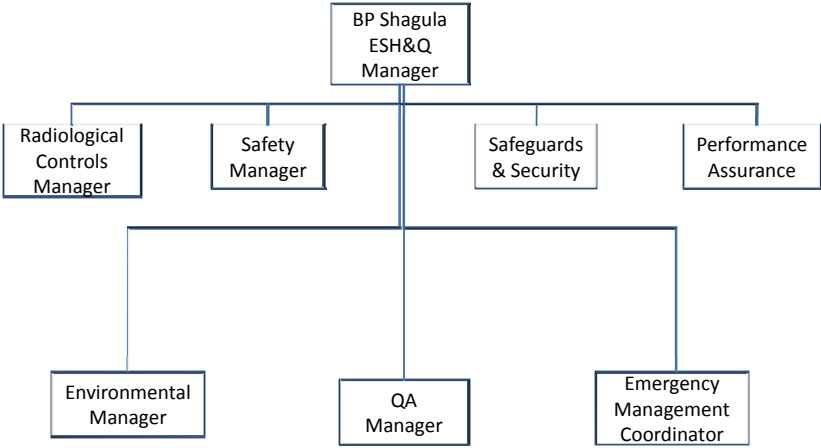
EM Environmental Management

safety ❖ performance ❖ cleanup ❖ closure

www.em.doe.gov

7

ESH&Q Staffing and Organization



EM Environmental Management

safety ❖ performance ❖ cleanup ❖ closure

www.em.doe.gov

8

Quality

- Quality is important because it ensures we have done things correctly and compliantly
- Modification of current documentation due to the change in contractual requirements and scope of our work



EM Environmental Management

safety ❖ performance ❖ cleanup ❖ closure

www.em.doe.gov

9

Safety and Health

- Ensure safe, compliant work
- Focus on hazard prevention
- Oversight
- Focused inspections
- Advocate



EM Environmental Management

safety ❖ performance ❖ cleanup ❖ closure

www.em.doe.gov

10

Environmental

- Stewards for future generations
- Environmental compliance
- Environmental certification
- Environmental database



EM Environmental Management

safety ❖ performance ❖ cleanup ❖ closure

www.em.doe.gov

11

Safeguards & Security

- Personnel
- Facility
- Information
- Security awareness campaign



EM Environmental Management

safety ❖ performance ❖ cleanup ❖ closure

www.em.doe.gov

12

Rad Con

- One of the 'Big Six'
- Support the projects
- Reduce likelihood of events
- Emergency Response



EM Environmental Management

safety ❖ performance ❖ cleanup ❖ closure

www.em.doe.gov

13

Emergency Management

- Preparedness
- Assess needs
- Realistic exercises
- New technology



EM Environmental Management

safety ❖ performance ❖ cleanup ❖ closure

www.em.doe.gov

14

Performance Assurance

- Contractor assurance
- Leading indicators
- Lagging indicators
- Tracking and trending
- SAC



EM Environmental Management

safety ❖ performance ❖ cleanup ❖ closure

www.em.doe.gov

15

Facility Disposition Overview Dan Coyne



EM Environmental Management

safety ❖ performance ❖ cleanup ❖ closure

www.em.doe.gov

16

Facility Disposition Milestones

- Demolish MPPB
- Demolish Vitrification Facility
- Demolish 60+ Balance of Site facilities



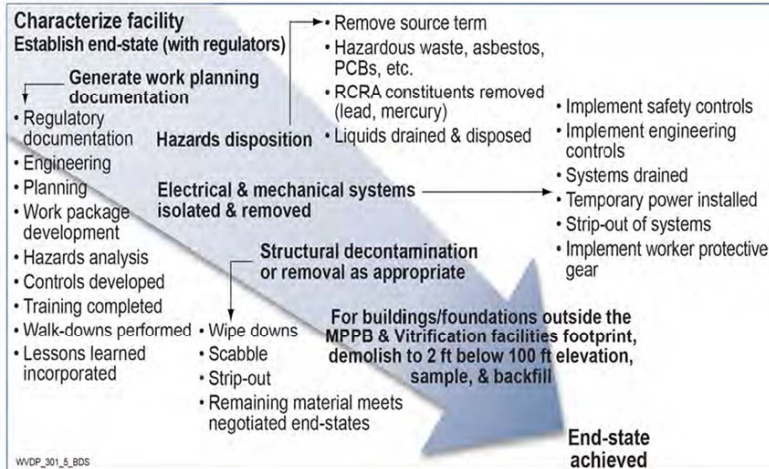
EM Environmental Management

safety ❖ performance ❖ cleanup ❖ closure

www.em.doe.gov

17

How do we get there?



EM Environmental Management

safety ❖ performance ❖ cleanup ❖ closure

www.em.doe.gov

18

Initial Facility Disposition Activities

- Develop framework for Facility Disposition Project
 - Establish interfaces between Nuclear Operations and Storage and Waste Operations
 - Integrate ESH&Q functions into all facets of the organization
- Work with Waste Ops and Nuclear Ops on an early plant clean-up campaign of miscellaneous waste items and debris
- Characterize MPPB and Vit plant to commence early end-state planning



EM Environmental Management

safety ❖ performance ❖ cleanup ❖ closure

www.em.doe.gov

19

Waste Operations Overview Ray Geimer



EM Environmental Management

safety ❖ performance ❖ cleanup ❖ closure

www.em.doe.gov

20

Waste Volumes to be Shipped

Waste Type	Anticipated Volume
Low Level Waste	1,600,000 ft ³
Mixed Low Level Waste	7,500 ft ³
Hazardous Waste	6,000 ft ³
Industrial Waste	980,000 ft ³
Sanitary Waste	30,000 ft ³



EM Environmental Management

safety ❖ performance ❖ cleanup ❖ closure

www.em.doe.gov

21

Waste Milestones

- Prepare and ship all Legacy waste offsite by November 2014
- Complete processing of TRU
- Upgrade RTS Drum Cell for long term TRU waste storage
- Relocate all TRU to RTS



EM Environmental Management

safety ❖ performance ❖ cleanup ❖ closure

www.em.doe.gov

22

Initial Waste Operations Activities

- Re-establish RHWF operations
- Begin shipping legacy low-level waste
- Evaluate condition of stored waste for compliance, container integrity and disposition
- Maintenance and upkeep on waste storage areas
 - Fix building deficiencies
 - Crush empties
 - General maintenance and housekeeping



EM Environmental Management

safety ❖ performance ❖ cleanup ❖ closure

www.em.doe.gov

23

Initial Waste Operations Activities

- Develop framework for WGS organization
 - Establish interfaces between waste generators and Waste operations
 - Support characterization of waste for the planned D&D to ensure disposition path
- Work with BOSF on an early plant clean-up campaign of miscellaneous waste items and debris
- Review WIR documents and status outstanding action and path forward
- Initiate activities toward shipment of Melter, CFMT and MFHT



EM Environmental Management

safety ❖ performance ❖ cleanup ❖ closure

www.em.doe.gov

24

Nuclear Operations and Storage (NOS) Heatherly Dukes



EM Environmental Management

safety ❖ performance ❖ cleanup ❖ closure

www.em.doe.gov

25

Near-term Innovations/Changes

Innovation	Timeframe
New PSO Hub/Enhanced Monitoring	FY12
New Computerized Maintenance Management System	Dec 2011
New Laundry/PPE Approach	Nov 2011
Day Shift PSO Complement	Dec 2011
Numerous facilities taken cold, dark, and dry	2012/2013



EM Environmental Management

safety ❖ performance ❖ cleanup ❖ closure

www.em.doe.gov

26

HLW Canister Storage Project

- Build new canister storage pad/upgrade road
- Complete Main Plant Mods
- Relocate HLW Canisters

Two alternatives for storage



EM Environmental Management

safety ❖ performance ❖ cleanup ❖ closure

www.em.doe.gov

27

Initial Nuclear Operations Activities

- Establish new protocol for Conduct of Operations/shift complement
- Initiate HLW canister project planning
- Begin end-points planning/process for buildings going cold, dark and dry
- Begin planning 8D-4 Tank characterization



EM Environmental Management

safety ❖ performance ❖ cleanup ❖ closure

www.em.doe.gov

28

Initial Nuclear Operations Activities, Continued

- Initiate planning for enhanced wireless monitoring/new PSO Control Room
- Implement new CMMS process
- Rearrange warehouses /move fab shop
- Plan for laundry shutdown/new PPE approach
- Align programs and procedures for contract compliance



EM Environmental Management

safety ❖ performance ❖ cleanup ❖ closure

www.em.doe.gov

29

QUESTIONS?



EM Environmental Management

safety ❖ performance ❖ cleanup ❖ closure

www.em.doe.gov

30