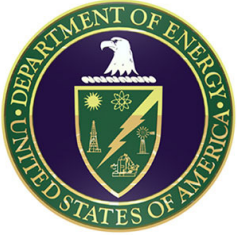


# West Valley Phase 1 Studies Update

Presented By



Quarterly Public Meeting  
February 22, 2012



# Agenda



**Status of Erosion PAS**

**Status of Climate Change Workshop**

**Status of ISP**

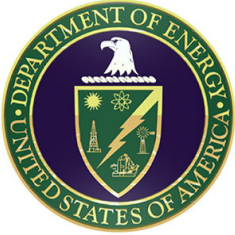
**Looking Ahead**

**Near - Term Timeline**

NCE



Closing



# Status of Erosion PAS



- ECS invited SMEs to participate in the Erosion PAS. These SMEs are familiar with the West Valley site. A brief bio of each SME is presented in the following slides.
  - **Robert Fakundiny, PhD**
  - **Sean Bennett, PhD**
  - **Michael Wilson, PhD**
  - **Greg Tucker, PhD**
  - **Sandra Doty, MS**
  - **Joseph Price, PhD**
- ECS has completed contracting agreements with the SMEs for Erosion PAS.
- A Kick Off meeting was held on February 13, 2012 with SMEs, DOE, NYSERDA, and ECS to discuss the mission, roles, and scope.





# Status of Erosion PAS



## SME Objectives:

- Form a collaborative working group
- Evaluate erosion area of study to determine whether further study will facilitate interagency consensus
- Recommend a study or suite of studies to facilitate consensus
- Assist in scoping of studies
- Oversee study implementation
- Review study results and present findings and recommendations
- Consider stakeholder input and provide updates and responses to stakeholder comments and questions





# Status of Erosion PAS



## SME Members for Erosion PAS:

**Robert Fakundiny, PhD:** New York State Geologist Emeritus; he has conducted extensive research on the geology, hydrology and geomorphology of the Western New York Nuclear Service Center.

**Sean Bennett, PhD:** Professor, Dept. of Geography, State University of New York at Buffalo; he has expertise in physical and numerical modeling of gully erosion and river processes.

**Michael Wilson, PhD:** Professor of Geology at the State University of New York at Fredonia; he has expertise in chemical and sediment loading in the watersheds of southwestern New York State; he has done significant work on erosion processes and rates, and has investigated the effectiveness of implementing erosion controls at many locations across the Southern Tier of New York.





# Status of Erosion PAS



## SME Members for Erosion PAS (cont.):

**Greg Tucker, PhD:** Assoc. Professor, Dept. Of Geological Sciences, University of Colorado at Boulder; he has expertise in landscape evolution, tectonic geomorphology, impacts of climate change on hill slope and fluvial systems, numerical simulation of landform development.

**Sandra Doty, MS:** Degrees in Geological Engineering and Mineral Engineering; she is a recognized expert with more than 30 years experience in hydrologic/hydraulic and sediment transport analyses; she has been an expert witness and has provided training to the U.S. EPA in these topics.

**Joseph Price, PhD:** Chemical engineer with thirty-two years experience; his primary areas of expertise include technical and environmental analysis of radioactive and hazardous waste storage and disposal, safety analysis of nuclear facilities, modeling of fluid flow and mass transfer processes, chemical process simulation and analysis, and technical/economic assessments.



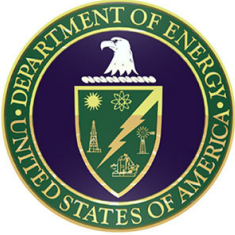


# Status of Climate Change Workshop



- ECS is working with DOE and NYSEERDA to identify potential *Climate Change* experts to participate in the workshop.
- ECS is working with DOE and NYSEERDA on overall logistics and workshop objectives, and possible dates.





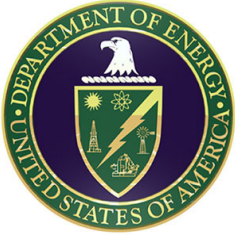
# Status of ISP



- ECS invited four experts to participate in the West Valley Phase 1 Studies as a members of the ISP. A brief bio of the ISP is presented in next slides.
  - **Dr. John Garrick**
  - **Dr. James Clarke**
  - **Dr. Chris Whipple**
  - **Dr. Kristin Shrader-Frechette**
- ISP members have signed contract agreements with ECS.
- A Kick-Off meeting with ISP members, DOE, NYSERDA, and ECS representatives was held on February 22, 2012.







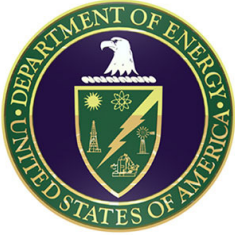
# Status of ISP



## ISP Objectives:

- Provide independent scientific guidance to DOE and NYSERDA and to the SME working groups during the identification and scoping of Phase 1 Studies
- Review study plans and activities, as needed
- Provide guidance to DOE, NYSERDA, and SME working groups to keep the Phase 1 Studies process moving, as needed
- Assist in resolving differences of opinion among SMEs
- Consider stakeholder input
- Provide opinions, updates, and responses to stakeholder questions and comments





# Status of ISP



## ISP Members:

**Dr. B. John Garrick:** Ph.D. in Engineering and Applied Science and an M.S. in Nuclear Engineering from the University of California, Los Angeles; he is a graduate from the Oak Ridge School of Reactor Technology; he is an executive consultant on the application of the risk sciences to complex technological systems in the space, defense, chemical, marine, transportation, and nuclear fields.

**Dr. James Clarke:** Professor of Earth and Environmental Sciences, Vanderbilt University; he is an expert in Risk analysis, investigation & remediation of contaminated sites, long term management of legacy nuclear & hazardous waste sites, contaminant transport, and environmental forensics.





# Status of ISP



## ISP Members (cont.):

**Dr. Chris Whipple:** Principal with ENVIRON International Corporation in Emeryville, CA. He holds a Ph.D., M.S., and B.S. in Engineering Science; he is a Member of the National Academy of Engineering and is a Designated National Associate of the National Academies. He chaired and served on the National Academy of Sciences Board On Radioactive Waste Management.

**Dr. Kristin Shrader-Frechette:** Professor, Department of Biological Sciences and Department of Philosophy, University of Notre Dame; she directs the Center for Environmental Justice and Children's Health; In 2004 Dr. Shrader-Frechette became only the third American to win the World Technology Award in Ethics.





# Looking Ahead



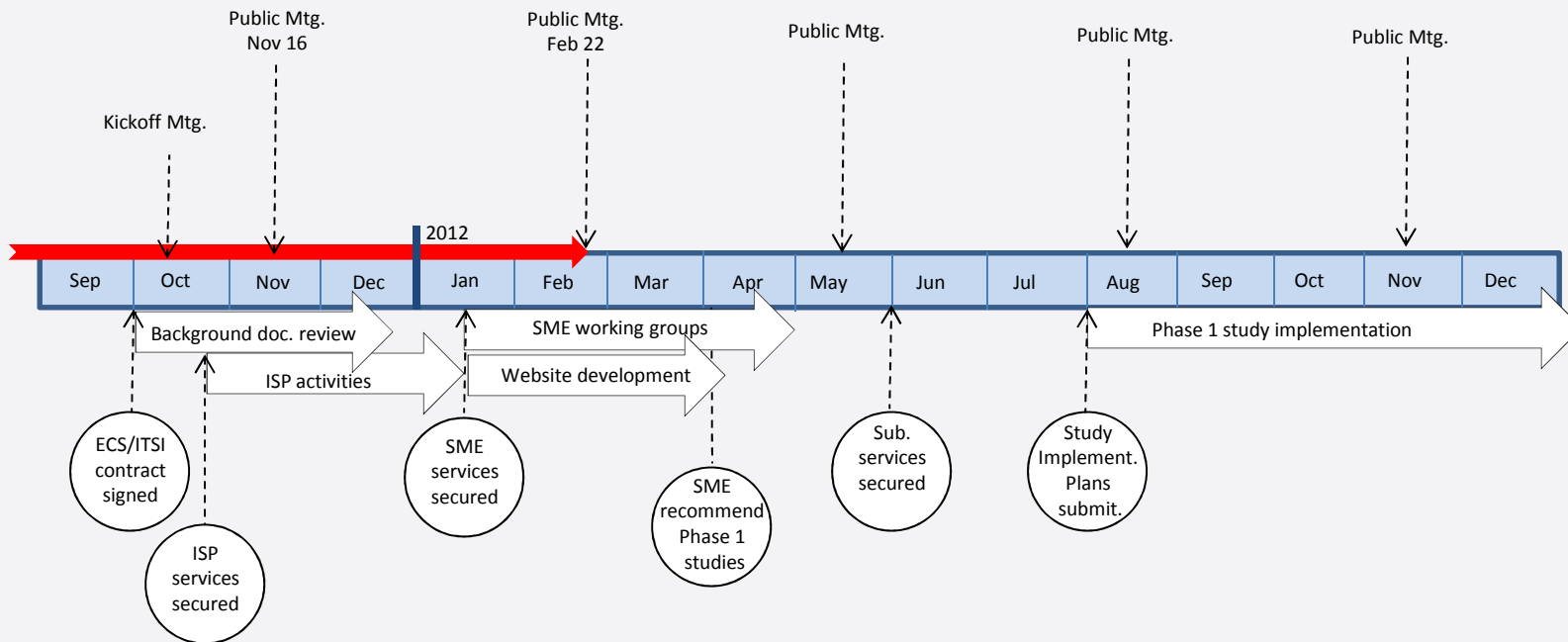
## Upcoming ECS Work Activities:

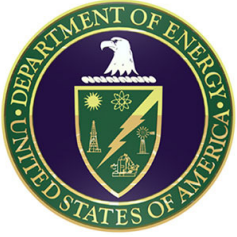
- Continue to work with DOE/NYSERDA on Phase 1 Study Website
- Continue to work with DOE/NYSERDA on Climate Change Workshop
- Continue to work on the Erosion PAS





# Near-Term Timeline





# Acronyms



DOE	Department of Energy
ECS	Enviro Compliance Solutions, Inc.
ISP	Independent Scientific Panel
NYSERDA	New York State Energy Research and Development Authority
PAS	Potential Area of Study
SME	Subject Matter Expert



**We Welcome Your Questions . . .**

