



## CHBWV Project Update

### Citizen Task Force

**Dan Coyne**

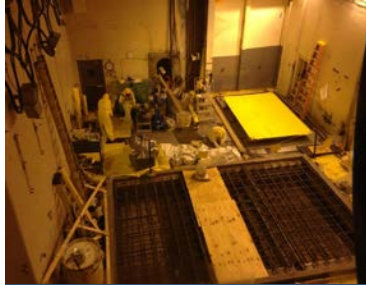
*President and General Manager*  
CH2M HILL B&W West Valley, LLC

**March 25, 2015**

## Safety Performance

- As of March 19, CHBWV and subcontractors worked approximately 1,315,799 work hours or 864 work days without a lost-time work accident or illness
- No recordable or first aid cases resulted during this period. (Best performance in the DOE Complex for similar type work)
- No Personnel or ORPS Recordable Clothing Contaminations
- No Intakes or Unplanned Radiological Exposures

## HLW Canister Storage Project



Completed EDR Soaking Pit Cap Installation (Before/After)



Tunnel Decontaminated

## Milestone 2 – Legacy Waste Disposition

### Legacy Waste Disposition through January 2015

Approximately 140,000 ft<sup>3</sup> in storage at start of contract

- Processed and shipped ~80,000 ft<sup>3</sup> for disposal since contract start
  - LLW: 56% complete (73,743 ft<sup>3</sup>)
  - MLLW: 79% complete (5,000 ft<sup>3</sup>)
  - Industrial: 100% complete (984 ft<sup>3</sup>)
  - Hazardous: 100% complete (163 ft<sup>3</sup>)
  - 84 shipments to date
- 243 LLW/MLLW containers available for shipment (three cement filter boxes and 240 LLW containers)
- Completed removal of first 80 drums of TRU waste from the Chemical Process Cell



Loading LLW Shipment to Nevada National Security Site (NNSS)



SR Box Shipment to NNSS

## MPPB Deactivation

- Liquid Waste Cell (LWC) – Concrete core boring complete (28 each) and hatch (seven each) cutting in progress
- Sample Storage Cell (SSC) – Completed manned entry for manipulator removal and final wipedown



LWC Hatch Work



SSC Sample Transfer Trench Before and After Cleanout

## Vitrification Facility Deactivation

- Crane Maintenance Room (CMR) – Package loose material, equipment, tools, and liquids for waste loadout (80% complete)



Vit CMR Cleanup (Before/After)

## Vitrification Facility Deactivation



HLW Trench Shield Plate Removal

### High Level Waste (HLW) Trench

- Removed trench cover and shield plate from first section



## Site Operations

### Lagoon 3

- Continue Work on 100% Design for Lagoon 3 Embankment Outfall Modification
- Completed repairs to Discharge Weir Box

### End-of-Season Road Cleanup and Repairs

- Thirty tons of sand removed
- Half ton of cold patch used for road repairs



Aerial View of Lagoon 3

# Questions?