



U.S. DEPARTMENT OF  
**ENERGY**

OFFICE OF  
**ENVIRONMENTAL  
MANAGEMENT**

# **WVDP Project Update**

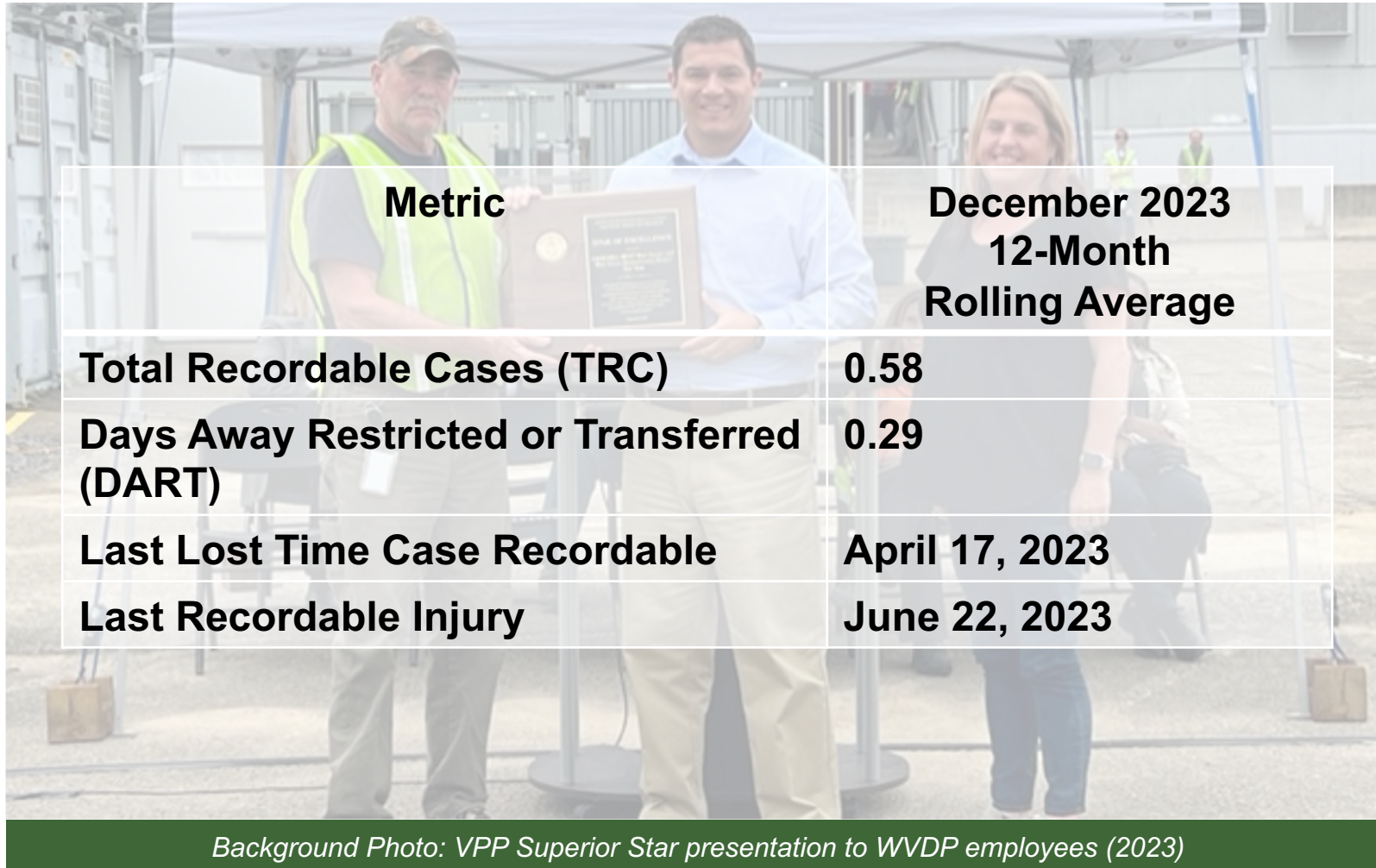
## **Main Plant Process Building Controlled Deconstruction**

---

*Kelly Wooley, CHBWV Deputy General Manager*

Citizen Task Force Meeting – January 24, 2024

# Safety



<b>Metric</b>	<b>December 2023 12-Month Rolling Average</b>
<b>Total Recordable Cases (TRC)</b>	<b>0.58</b>
<b>Days Away Restricted or Transferred (DART)</b>	<b>0.29</b>
<b>Last Lost Time Case Recordable</b>	<b>April 17, 2023</b>
<b>Last Recordable Injury</b>	<b>June 22, 2023</b>

*Background Photo: VPP Superior Star presentation to WVDP employees (2023)*

# FY2024 Goals



- Perform all work in a manner that is protective of employees, the public, and the environment
- Demo and ship 10,000 tons of Main Plant Process Building Waste
- Remove old locker rooms and Gatehouse, regrade area, and install new sidewalks
- Add a new access roadway between the North and South parking lots
- Complete disposal of remaining eight (8) High Integrity Containers
- Dispose of seven (7) of the legacy debris containers
- Achieve clean closure of the LSA #2 through required documentation, confirmatory sampling, and closure activities
- 8D-4 liquid sample collected
- Implement Optically Stimulated Luminescence (OSL) dosimetry



# Main Plant Deconstruction (Cont.)



Main Plant West Wall Before Deconstruction (June 2022)



Main Plant West Wall After Deconstruction (October 2023)

# Main Plant Deconstruction (Cont.)



Hot Cell Deconstruction

# Main Plant Deconstruction (Cont.)



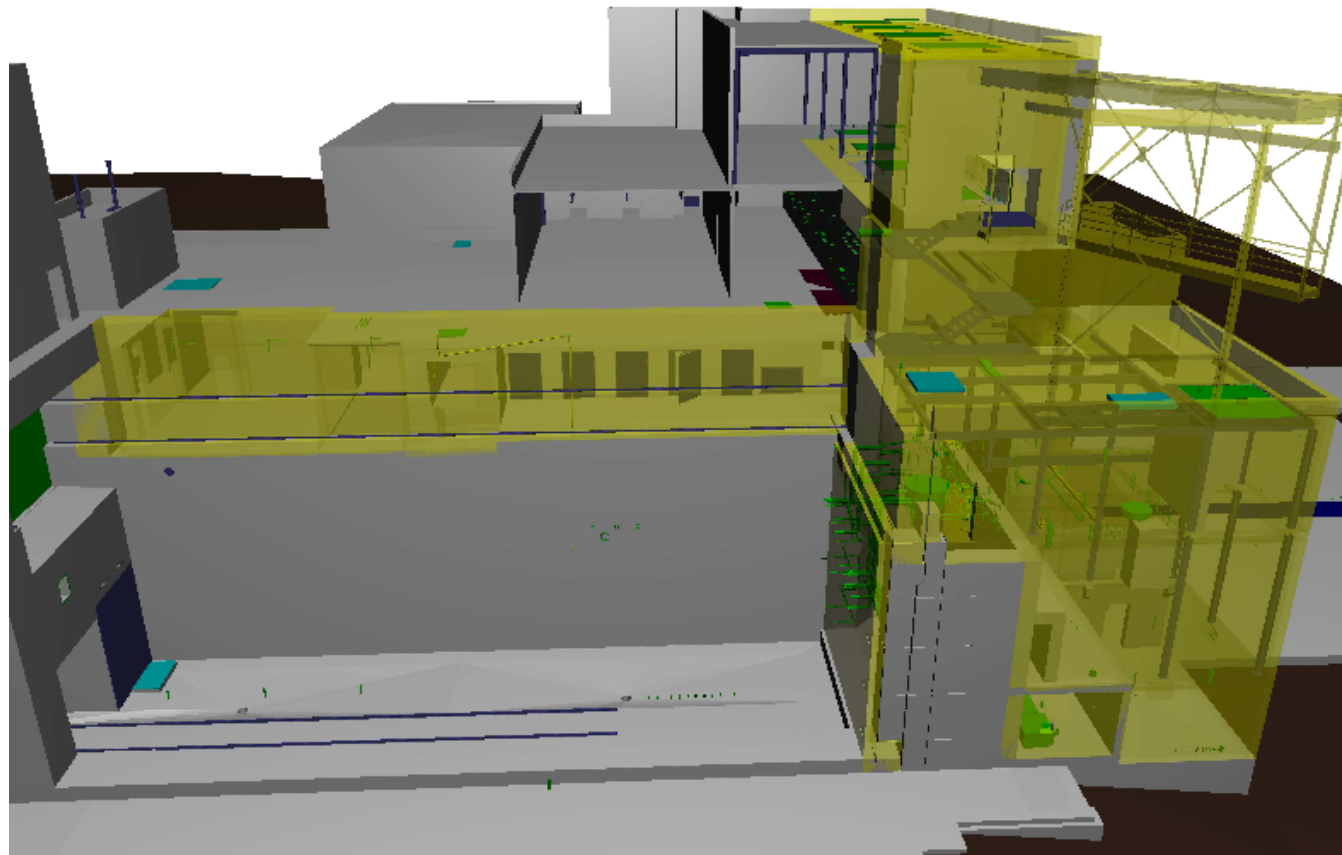
Chemical Process Cell lower east wall (November 9, 2023)

# Main Plant Deconstruction (Cont.)



Chemical Process Cell lower east wall removed (December 30, 2023)

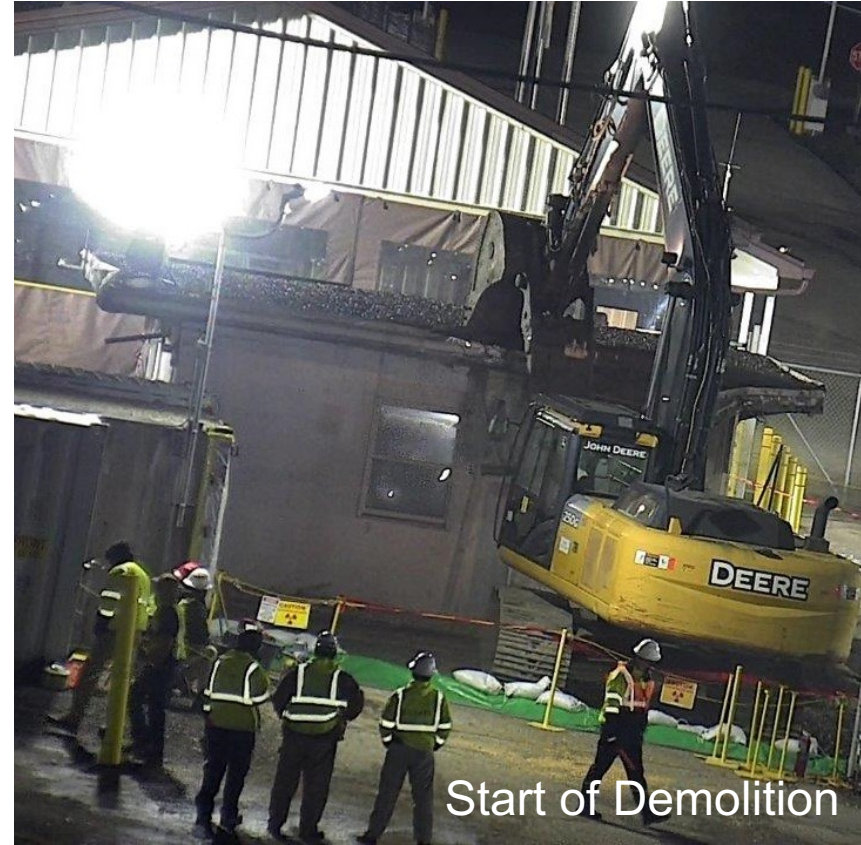
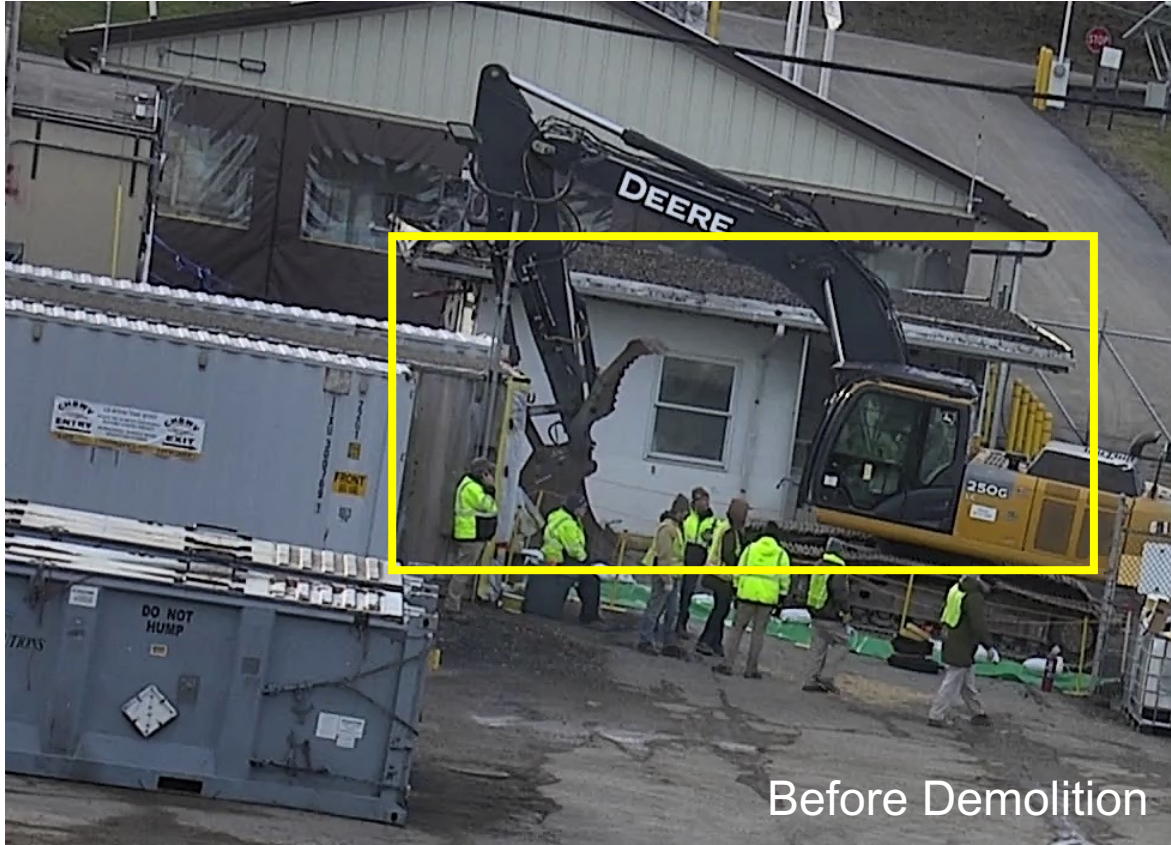
# Main Plant Deconstruction (Cont.)



3-D Model of Main Plant Deconstruction (Completed areas in Yellow)



# Old Guardhouse Demolition



# Old Guardhouse Demolition



# Waste and Site Operations

- Safely processed, over-packed, and shipped two of seven degraded Chemical Process Cell waste containers off-site for disposal
  - Both containers had a combined weight of 169,000 pounds
- Safely overpacked four High Integrity Containers into Department of Transportation-approved containers, transloaded them by truck to a rail yard in Lockport, New York where they were loaded onto rail cars and shipped by rail for safe disposal
  - Each HIC, which is inside of a steel reinforced concrete shield, contained spent ion exchange resins and diatomaceous earth from the former Fuel Receiving and Storage facility



# 2023 Community Support

- Community Service Donations:
  - West Valley Fire District #1: **\$80,000**
  - Bertrand Chaffee Hospital: **\$5,000**
  - Mercy Flight: **\$5,000**
- Annual Community Donations: **~\$12,000**
- Annual Food Drive
  - Collected enough food for **10,800** meals
  - Food delivered to nine food pantries
  - All done by volunteers
- United Way: **\$13,032**
- Toys For Tots: **350+ toys** collected

