



U.S. DEPARTMENT OF
ENERGY

OFFICE OF
ENVIRONMENTAL
MANAGEMENT

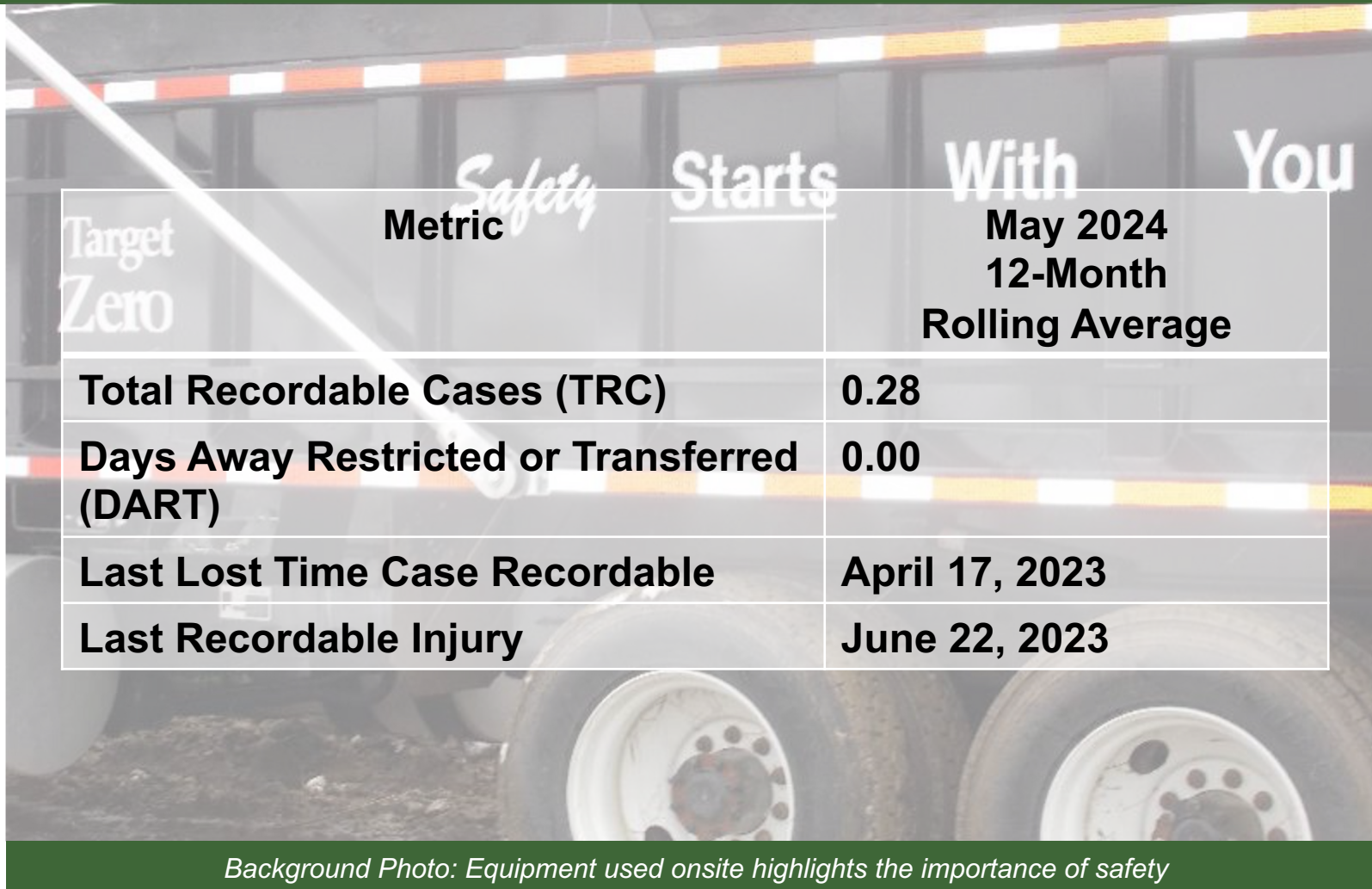
WVDP Project Update

Main Plant Process Building Controlled Deconstruction

Kelly Wooley, CHBWV Deputy General Manager

Citizen Task Force Meeting – June 26, 2024

Safety



Metric	May 2024 12-Month Rolling Average
Total Recordable Cases (TRC)	0.28
Days Away Restricted or Transferred (DART)	0.00
Last Lost Time Case Recordable	April 17, 2023
Last Recordable Injury	June 22, 2023

Background Photo: Equipment used onsite highlights the importance of safety

Main Plant Deconstruction - Areas Completed

- Solvent Storage Terrace
- Upper Warm Aisle
- Lower Warm Aisle
- VEC Duct Sections from Upper Warm Aisle
- South Stairs
- Extraction Cell 1, 2, and 3
- Extraction Chemical Room
- Extraction Cell Room Monorail
- Off Gas Blower Room and Shield Window
- Acid Recovery Cell
- Acid Recovery Pump Room
- Chemical Process Cell Windows
- Ventilation Exhaust Cell and Plenum
- Hot Acid Cell
- Off Gas Cell
- Chemical Process Cell Penthouse
- Process Chemical Room
- Chemical Process Cell Racks
- Remainder of Main Plant Ventilation Stack
- Analytical Decontamination Aisle
- ICP Lab
- Control Room
- Upper Extraction Aisle
- CTS Lab
- Sample Storage Cell and Window Removal
- Chemical Operating Aisle
- Lower Extraction Aisle
- Chemical Process Cell
- Liquid Waste Cell and all nine tanks
- Waste Receiving and Package Area
- Product Packaging and Shipping
- Uranium Loadout Structure
- Uranium Loadout Scale
- Product Packaging and Handling Area
- Sample Cell #2
- Hot Cells 2,3,4 and 5 Shield Window Removals
- West Mechanical Operating Aisle
- Mass Spec Lab
- Chemical Process Cell Sampler Removal
- Hot Cells 2,3,4 and 5
- Vitrification Lab
- Radiochemistry Lab
- Third Floor Restroom
- Extraction Sample Aisle
- Uranium Loadout
- East Stairs
- Analytical Chemistry Lab
- Ventilation Wash Room Washer Removal

Main Plant Deconstruction



Main Plant west wall before deconstruction (June 2022)



Main Plant west wall (May 2024)

Main Plant Deconstruction



Main Plant east side before deconstruction



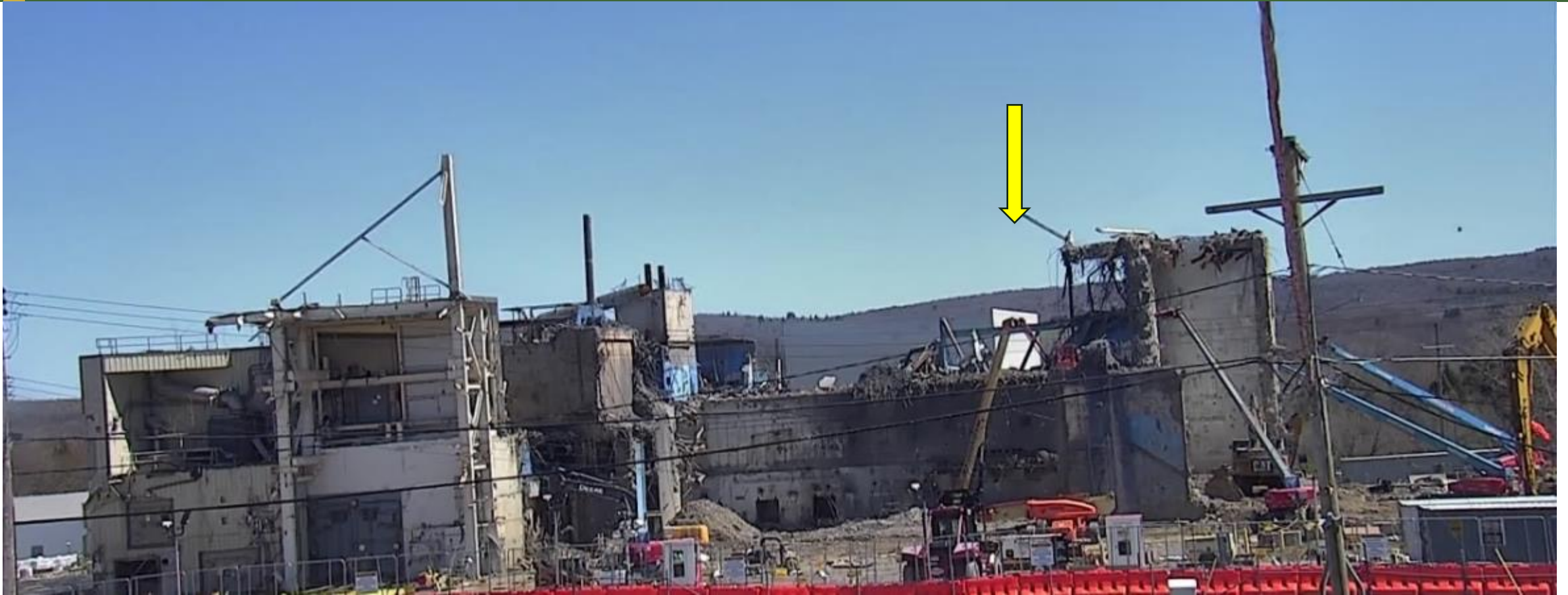
Main Plant east wall (May 2024)

Main Plant Deconstruction (Cont.)



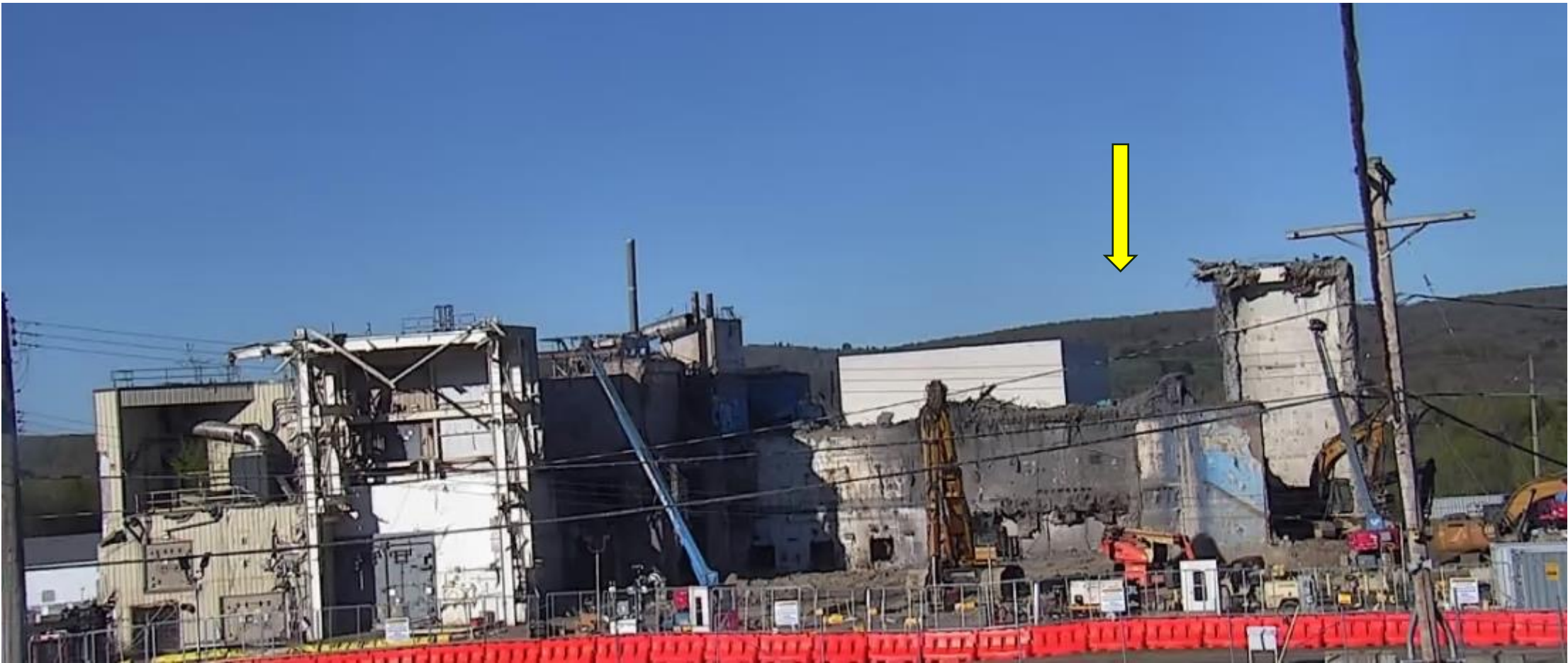
Deconstruction of Control Room and Upper Extraction Aisle

Main Plant Deconstruction (Cont.)



Deconstruction of Control Room and Upper Extraction Aisle

Main Plant Deconstruction (Cont.)



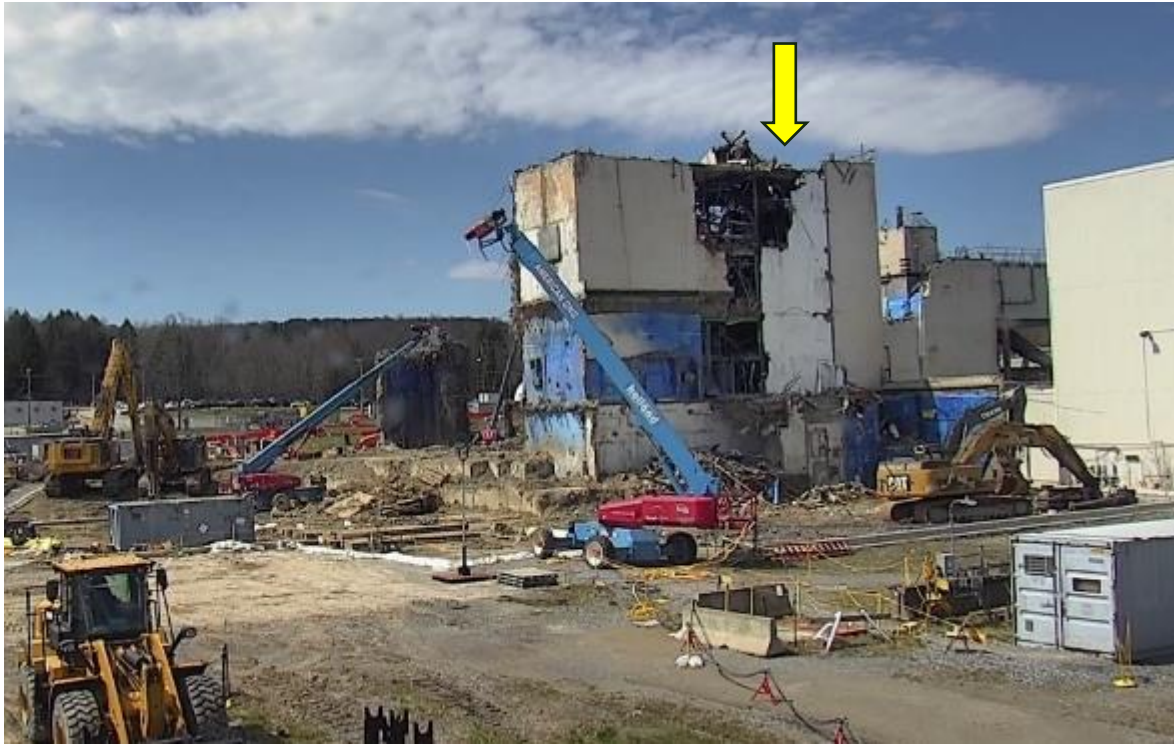
Control Room, UXA and Analytical Aisles removed

Main Plant Deconstruction (Cont.)



Loading Control Room and Upper Extraction Aisle debris on second shift (8:00 p.m.)

Main Plant Deconstruction (Cont.)



East side before and after deconstruction

Main Plant Deconstruction (Cont.)



Waste loadout on west side

Main Plant Deconstruction (Cont.)



Removal of Liquid Waste Cell and Lower Extraction Aisle (West side)



See through building from east side to west side

Main Plant Deconstruction (Cont.)



Lower Extraction Aisle and Instrument Room

Main Plant Deconstruction (Cont.)



Removal of the Uranium Product Cell Tank 5D-15B from the east side of Main Plant

Main Plant Deconstruction (Cont.)



Rigging Tank 5D-15B for placement into specialty shipping container

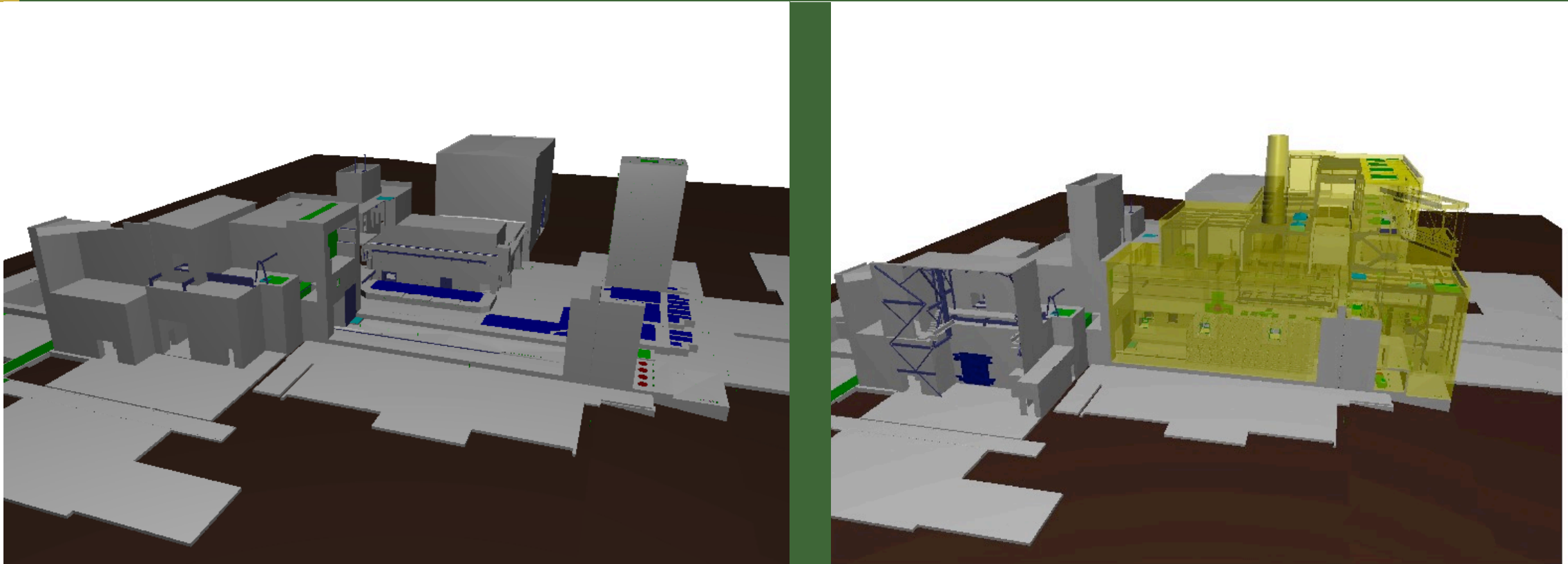
Main Plant Deconstruction (Cont.)



Loading Tank 5D-15B into a specialty container

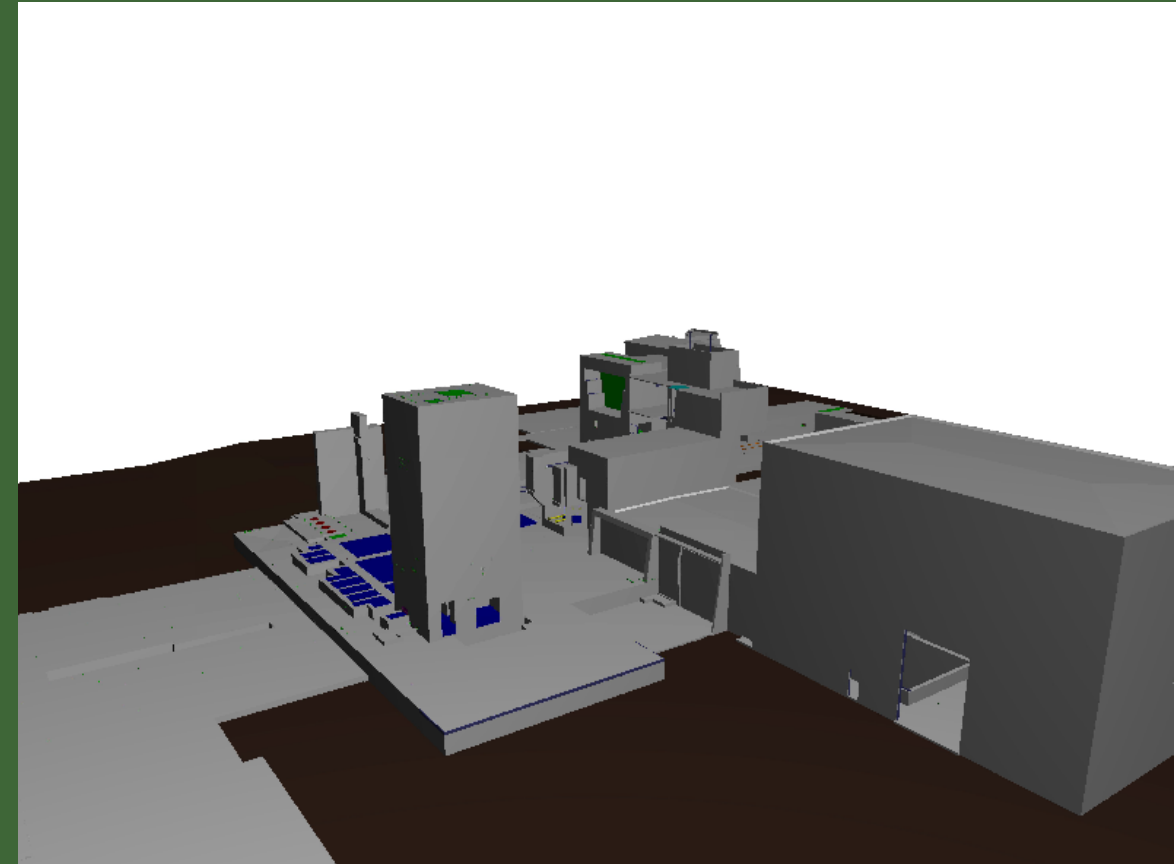
NOTE: Red flags are hanging on a warning line that is lower than the power lines for visibility.

Main Plant Deconstruction (Cont.)



3-D Model of Main Plant Deconstruction
(Completed areas in Yellow)

Main Plant Deconstruction (Cont.)



3-D Model of Main Plant Deconstruction
(Completed areas in Yellow)

Waste and Site Operations

- Safely overpacked and shipped all eight(8) High Integrity Containers (HICS)
- Safely processed and overpacked two more Chemical Process Cell waste containers; plan to ship one in June and one in July
- Nine (9) of 12 legacy oversized debris containers have been shipped
 - The remaining 3 have been overpacked and are ready for shipment (two in July and one in September)

